

# **Column Flow**

**CS3/CS4/CS5  
InDesign Plug-in**

version 1.0.7

last revision: January 6, 2011

# Column Flow

## Contents

### 3 “What does Column Flow do?”

Spanning Headers/Footers

Precise Control of Positioning

Boxed Sections/Styled Sections

Column Flow and CSS Span Columns

### 6 Examples of Use

### 10 Installation

Macintosh Install

Windows Install

### 12 Purchasing Licenses and Activation

### 14 Before You Start

### 14 Basic Setup

Preliminary Setup

Configuration Setup

### 19 Setting Up Styles

### 22 Running Column Flow

### 23 Addendum

What is “APID ToolAssistant”?

### 25 Acknowledgements

### 26 License Agreement

## “What does Column Flow do?”

### Spanning Headers/Footers

Creating headers or footers which span multiple columns is a very difficult task in InDesign. This is because all column settings are set by the text frame. Creating different column settings requires creating a new text frame each time that the number of columns change. The text frames must then be manually positioned.

*Column Flow* attempts to simplify this process by allowing the setting the number of columns within paragraph styles. Each style applied in the story must have the number of columns defined.

Once properly set up, *Column Flow* will flow the text and add / remove text frames as necessary to properly flow the text. It can flow text one page at a time. It can flow an entire story. It can even flow an entire document comprised of many stories.

### Precise Control of Positioning

To further insure proper positioning of the text frames, text blocks can be automatically aligned to the baseline grid, and specific paragraph styles can be defined as headers. (So they will always appear above the following text block.) Additionally, *Column Flow* offers many advanced keeps options which gives a tremendous amount of flexibility in controlling how your text flows.

### Boxed Sections/Styled Sections

*Column Flow* (in CS3 and later) allows object styles to be attached to specific paragraph styles. Any time the associated object style changes, *Column*

# Column Flow

*Flow* will break the text frame, and continue the text flow with a new text frame below. This is very useful for creating sections with a box around it, or a background color. It can even be used for automatically creating headings with transparency effects!

## Column Flow and CS5 Span Columns

InDesign CS5 introduced a new feature called *Span Columns*. *Span Columns* essentially does what *Column Flow* was created to accomplish. There are however some differences that might make *Column Flow* a better choice than *Span* (or *Split*) *Columns*:

1. The most obvious difference between *Span Columns* and *Column Flow* is that *Span Columns* works dynamically, while *Column Flow* must be invoked to create separate text frames for each text section. While the dynamic nature of *Split Columns* is usually desirable, there are cases where it is more limiting. One example might be a case where you need to add or subtract space between text sections.
2. *Span and Split Columns* gives very little control over keeps options, and very often keeps are completely ignored to prevent columns from remaining with no text. *Column Flow* gives very precise control over keeps with three different levels of strictness to give you your preferred balance between type-fitting and adherence to keeps rules.
3. Additionally, *Column Flow* gives an option to keep specific numbers of columns together as a unit, so it will not break across pages, while *Span Columns* does not offer this level of control.

## “What does Column Flow do?” / Column Flow and CS5 Span Columns

4. *Column Flow* gives precise control over whether text sections are snapped to the baseline grid. This ensures proper alignment of heading text which is normally not baseline aligned.
5. *Column Flow* performs more column balancing than *Span Columns*. It can even make pages one line long or short if necessary to balance the columns.
6. *Column Flow* can create spanning headings even across different stories when *Story Tools* is used to set up *Story Strings*.
7. When *Column Flow* is used in conjunction with *AutoFlow Pro*, master pages can be automatically applied.
8. *Column Flow* allows for boxed sections to be created with a border or background.
9. Because *Column Flow* creates a separate text frame for each section, transparency effects can be automatically applied to headings specifically.



The sample below shows a document which was composed using a number of components of our Suites. The columns were created by *Column Flow*. The headers were created by *Power Headers*, and the text was vertically justified by *Proper VJ*.

36	Chapter Title	Chapter Title	37
<p><b>Chapter Review</b></p> <p><b>Multiple Choice (page 166)</b></p> <p>1. 4 2. 1 3. 2 4. 3 5. 2 6. 2 7. 4 8. 1 9. 3 10. 3 11. 3</p> <p><b>Thematic Essay (page 167)</b></p> <p>1. Students should discuss the ways in which these factors helped either to cause or restrain the authoritarian nature of these governments and (b) their success in quelling democratic movements.</p> <p>2. Nationalism and the drive toward democracy were the two main reasons for the failure of the efforts that came out of the Congress of Vienna.</p> <p><b>Document Based Questions (page 167)</b></p> <p>1. The main geographic factors involved by the map in Russia's isolated position in eastern northeastern Europe and northeastern Asia and the enormous distance separating most of the Russian countryside from western Europe.</p> <p>2. The village as a whole was responsible for the peasant taxes and, therefore, had collective interest in seeing that everyone paid. Peasants were not allowed to move out of the village without permission.</p> <p>3. Villagers were encouraged to spy on one another.</p> <p>4. They argued that in order to be legitimate, the government must respect the will of the people, and that the current government did not do this. The idea that such a government could fairly or successfully come from the Enlightenment and, in particular, from John Locke.</p> <p><b>Document Based Essay (page 167)</b></p> <p>Students should explain that the peasants and nobles of Russia and Latin America were emboldened and united if ever, against these ideas.</p> <p><b>Chapter 17 Global Nationalism</b></p> <p><b>Info Check (page 170-171)</b></p> <p>1. "Blood and iron" refers to Bismarck's determination to use war to unify the German states and expand their power. The location of the Reich signified the success of his policy.</p> <p>2. • Giuseppe Mazzini</p> <p>• Giuseppe Garibaldi</p> <p>• Camillo di Cavour</p> <p>3. Bismarck's government gave the lesser aristocratic power over the elected legislature. He formalized the role of nobles by providing a variety of social insurance benefits to German workers. These measures retarded the development of civil democracy in Germany.</p> <p><b>Info Check (page 171, right column)</b></p> <p>1. nationalism; identification with the United States as a whole</p> <p>2. nationalism; identification with the interests of one section (or region) within the country</p>	<p>proves. The location of the Reich signified the success of his policy.</p> <p>2. • Giuseppe Mazzini</p> <p>• Giuseppe Garibaldi</p> <p>• Camillo di Cavour</p> <p>3. Bismarck's government gave the lesser aristocratic power over the elected legislature. He formalized the role of nobles by providing a variety of social insurance benefits to German workers. These measures retarded the development of civil democracy in Germany.</p> <p><b>Info Check (page 171, right column)</b></p> <p>1. nationalism; identification with the United States as a whole</p> <p>2. nationalism; identification with the interests of one section (or region) within the country</p>	<p>1. Students see the movement for the formation of a Jewish state in Palestine. It was generally supported by Jews who dreamed of a return to their biblical homeland and a refuge from anti-Semitism. It was opposed by Arabs, who also claimed Palestine, many of whom had been living there for centuries. When the tiny partitioned Palestine became the new promiser, many Jews tried to drive the Arabs out, while some Jews continued to press for Jewish occupation of all of Palestine.</p> <p><b>Info Check (page 177)</b></p> <p>1. Croats, Serbs, Slovenians, Romanians, Eastern Orthodox Christians, and Muslims.</p> <p>The violence spread to Macedonia because the government was unable to manage to control the tide of ethnic Albanians fleeing the attacks from the Serbian military.</p> <p>2. Among the issues (British rejected) dividing Protestants and Catholics in Northern Ireland have been economic disparities, Catholic claims that their property and civil rights were abused by the Protestant majority, connection with the United Kingdom, the possibility of union with the Republic of Ireland, and</p> <p>3. He despised them, feeling that they were not tall or leg soldiers was the only way to unify Germany and make it a major power.</p> <p>3. The headline was a symbol of Italy's rapid expansion. It gradually won control of China and the First Bank to the Palestinian Arabs, and of the continuing desire of the leaders of both groups to find a just and peaceful solution to the conflict over Palestine.</p> <p><b>Document Based Essay (page 181)</b></p> <p>Answer all parts</p> <p><b>Chapter 18 Economic and Social Revolutions</b></p>	<p>the presence of British troops in Northern Ireland. The Catholics have little a nationalistic bond with their fellow Irish in the Republic of Ireland, while the Protestants have little a nationalistic identification with Ulster.</p> <p>3. Each group argues Palestine was an inhabited and claims the right to dominate it.</p> <p><b>Chapter Review</b></p> <p><b>Multiple Choice (page 177-178)</b></p> <p>1. 2 2. 2 3. 4 4. 5 5. 4 6. 7 7. 8 8. 9 9. 3 10. 2 11. 4 12. 3</p> <p><b>Thematic Essay (page 178)</b></p> <p>1. Answer will vary.</p> <p>2. Answer will vary.</p> <p>3. It is an answer consistent at their level of a national identity while appealing to their pride in Italy's "honor granted," and declares that God supports the Italian cause in Italian nation.</p> <p>4. The despised them, feeling that they were not tall or leg soldiers was the only way to unify Germany and make it a major power.</p> <p>5. The headline was a symbol of Italy's rapid expansion. It gradually won control of China and the First Bank to the Palestinian Arabs, and of the continuing desire of the leaders of both groups to find a just and peaceful solution to the conflict over Palestine.</p> <p><b>Document Based Essay (page 181)</b></p> <p>Answer all parts</p> <p><b>Chapter 18 Economic and Social Revolutions</b></p> <p><b>Info Check (page 179)</b></p> <p>1. Farming became more efficient and productive. Small farms that grew food for local use were increasingly replaced by large farms producing crops for large cities and foreign markets. This happened because of</p> <p>2. The new factory system took away the small farmers' ability to produce themselves through communal use of part of the technology.</p>
<p><b>Chapter 17 Global Nationalism</b></p> <p><b>Info Check (page 170-171)</b></p> <p>1. "Blood and iron" refers to Bismarck's determination to use war to unify the German states and expand their power. The location of the Reich signified the success of his policy.</p> <p>2. • Giuseppe Mazzini</p> <p>• Giuseppe Garibaldi</p> <p>• Camillo di Cavour</p> <p>3. Bismarck's government gave the lesser aristocratic power over the elected legislature. He formalized the role of nobles by providing a variety of social insurance benefits to German workers. These measures retarded the development of civil democracy in Germany.</p> <p><b>Info Check (page 171, right column)</b></p> <p>1. nationalism; identification with the United States as a whole</p> <p>2. nationalism; identification with the interests of one section (or region) within the country</p>	<p>proves. The location of the Reich signified the success of his policy.</p> <p>2. • Giuseppe Mazzini</p> <p>• Giuseppe Garibaldi</p> <p>• Camillo di Cavour</p> <p>3. Bismarck's government gave the lesser aristocratic power over the elected legislature. He formalized the role of nobles by providing a variety of social insurance benefits to German workers. These measures retarded the development of civil democracy in Germany.</p> <p><b>Info Check (page 171, right column)</b></p> <p>1. nationalism; identification with the United States as a whole</p> <p>2. nationalism; identification with the interests of one section (or region) within the country</p>	<p>1. Students see the movement for the formation of a Jewish state in Palestine. It was generally supported by Jews who dreamed of a return to their biblical homeland and a refuge from anti-Semitism. It was opposed by Arabs, who also claimed Palestine, many of whom had been living there for centuries. When the tiny partitioned Palestine became the new promiser, many Jews tried to drive the Arabs out, while some Jews continued to press for Jewish occupation of all of Palestine.</p> <p><b>Info Check (page 177)</b></p> <p>1. Croats, Serbs, Slovenians, Romanians, Eastern Orthodox Christians, and Muslims.</p> <p>The violence spread to Macedonia because the government was unable to manage to control the tide of ethnic Albanians fleeing the attacks from the Serbian military.</p> <p>2. Among the issues (British rejected) dividing Protestants and Catholics in Northern Ireland have been economic disparities, Catholic claims that their property and civil rights were abused by the Protestant majority, connection with the United Kingdom, the possibility of union with the Republic of Ireland, and</p> <p>3. He despised them, feeling that they were not tall or leg soldiers was the only way to unify Germany and make it a major power.</p> <p>3. The headline was a symbol of Italy's rapid expansion. It gradually won control of China and the First Bank to the Palestinian Arabs, and of the continuing desire of the leaders of both groups to find a just and peaceful solution to the conflict over Palestine.</p> <p><b>Document Based Essay (page 181)</b></p> <p>Answer all parts</p> <p><b>Chapter 18 Economic and Social Revolutions</b></p> <p><b>Info Check (page 179)</b></p> <p>1. Farming became more efficient and productive. Small farms that grew food for local use were increasingly replaced by large farms producing crops for large cities and foreign markets. This happened because of</p> <p>2. The new factory system took away the small farmers' ability to produce themselves through communal use of part of the technology.</p>	<p>the presence of British troops in Northern Ireland. The Catholics have little a nationalistic bond with their fellow Irish in the Republic of Ireland, while the Protestants have little a nationalistic identification with Ulster.</p> <p>3. Each group argues Palestine was an inhabited and claims the right to dominate it.</p> <p><b>Chapter Review</b></p> <p><b>Multiple Choice (page 177-178)</b></p> <p>1. 2 2. 2 3. 4 4. 5 5. 4 6. 7 7. 8 8. 9 9. 3 10. 2 11. 4 12. 3</p> <p><b>Thematic Essay (page 178)</b></p> <p>1. Answer will vary.</p> <p>2. Answer will vary.</p> <p>3. It is an answer consistent at their level of a national identity while appealing to their pride in Italy's "honor granted," and declares that God supports the Italian cause in Italian nation.</p> <p>4. The despised them, feeling that they were not tall or leg soldiers was the only way to unify Germany and make it a major power.</p> <p>5. The headline was a symbol of Italy's rapid expansion. It gradually won control of China and the First Bank to the Palestinian Arabs, and of the continuing desire of the leaders of both groups to find a just and peaceful solution to the conflict over Palestine.</p> <p><b>Document Based Essay (page 181)</b></p> <p>Answer all parts</p> <p><b>Chapter 18 Economic and Social Revolutions</b></p> <p><b>Info Check (page 179)</b></p> <p>1. Farming became more efficient and productive. Small farms that grew food for local use were increasingly replaced by large farms producing crops for large cities and foreign markets. This happened because of</p> <p>2. The new factory system took away the small farmers' ability to produce themselves through communal use of part of the technology.</p>

# Column Flow

Shown below is a document which used Column Flow to create boxed sections. The boxes were created automatically using alternate text frame styles for text which is contained within the box. The boxed text can break across pages and a separate box is created for each section!

2 ACAMPROSATE

Acamprosate can affect your judgment, thinking, or coordination. Do not drive or operate dangerous machinery if you are taking this medicine.

**Possible Side Effects**

Almost 2 of every 3 people who take this medicine will experience a drug side effect.

- ▼ Most common: diarrhea.
- ▼ Common: headache, weakness, anxiety, depression, and sleep problems.
- ▼ Less common: pain, accidental injuries, gas, dizziness, dry mouth, tingling in the hands or feet, sweating, chest pain, loss of appetite, impotence, abnormal vision, rash, vomiting, and constipation.
- ▼ Rare: heart or kidney failure, suicidality, psoriasis, hypothyroidism, rheumatoid arthritis, and urinary tract infections.

Rare side effects can occur in almost any part of the body. Contact your doctor if you experience anything unusual while taking any medication.

**Drug Interactions**

- Mixing acamprosate with naltrexone can increase the levels of both drugs in the blood, but no dose adjustments are needed.

**Food Interactions**

You may take acamprosate with or without food.

**Usual Dose**

**Adult:** two 333-mg tablets 3 times a day.  
**Child:** not recommended.

**Overdosage**

The only symptom associated with acamprosate overdose has been diarrhea. Overdose victims should be taken to a hospital emergency room for observation and treatment. ALWAYS bring the prescription bottle or container.

**Special Information**

Contact your doctor if you are breast-feeding, pregnant, or thinking about becoming pregnant while taking this medicine.

Take care while driving a car or performing complex tasks. If you forget to take a dose, take it as soon as you remember. Do not double the dose. Do not remember until it is almost time for your next dose.

2 ACAMPROSATE

Acamprosate can affect your judgment, thinking, or coordination. Do not drive or operate dangerous machinery if you are taking this medicine.

**Possible Side Effects**

Almost 2 of every 3 people who take this medicine will experience a drug side effect.

- ▼ Most common: diarrhea.
- ▼ Common: headache, weakness, anxiety, depression, and sleep problems.
- ▼ Less common: pain, accidental injuries, gas, dizziness, dry mouth, tingling in the hands or feet, itching, sweating, chest pain, loss of appetite, weight gain or loss, impotence, abnormal vision, rash, vomiting, and constipation.
- ▼ Rare: heart or kidney failure, suicidality, psoriasis, hypothyroidism, rheumatoid arthritis, and urinary tract infections.

Rare side effects can occur in almost any part of the body. Contact your doctor if you experience anything unusual while taking any medication.

**Drug Interactions**

- Mixing acamprosate with naltrexone can increase the levels of both drugs in the blood, but no dose adjustments are needed.

**Food Interactions**

You may take acamprosate with or without food.

**Usual Dose**

**Adult:** two 333-mg tablets 3 times a day.  
**Child:** not recommended.

**Overdosage**

The only symptom associated with acamprosate overdose has been diarrhea. Overdose victims should be taken to a hospital emergency room for observation and treatment. If you seek treatment, ALWAYS bring the prescription bottle or container.

**Special Information**

Contact your doctor if you are breast-feeding, pregnant, or thinking about becoming pregnant while taking this medicine.

Take care while driving a car or performing complex tasks.



Shown below is a typical sample of Hebrew layout.

Two Separate Header Variables  
Defined Using Power Headers

<p><b>רשימי</b></p> <p>וסובר שלא נתמקטת אשת קטן מלהתייחס לבעלה מחמתן דעת אלא מחמתן שנים, שחידשת תורה שלא חלה על אשה תורת אשת קטן שאינו מבוגר בשנים. וכל זה ביבם קטן אבל ביבם חרש מכיון שהגיע לשנות גדלותו לא נתמקטת יבמתו מלחלו עליה תורת אשת.</p>	<p><b>נב</b></p> <p>דאשת איש, אלא מהני ביאתו למורי להפקיע זיקת כל הבית. וי"ל בזה דסבר ר"ש בעין מה שפירשו תוס' ריש פרקין אלוים ודבנטי שא"צ בר דעת לקנות יבמתו אבל נתמקטת קטן מלקנות יבמתו שלא חתייחם אשתו בתורת אשת איש בן דעת, אבל חולק ר"ש בפירוש המיעוט</p>	<p><b>רמזי</b></p> <p>הבא על יבמתו נ"ז ע"ב</p>	<p><b>סימן ט</b></p> <p><b>איסור כהונה של אשת ישראל שנאנסה שי' רש"י ובעה"מ</b></p> <p>רש"י ד"ה פסולה. צ"ב שלא הראה מקור איסור כהונה של אשת ישראל שנאנסה רבא או לעיל ל"ה ע"א. משמע שאסורה משום לא דאורייתא וכן פי' תורא"ש ברש"י. וי"ל בזה ע"פ מש"כ רש"י ד"ה בעלה ופירשו הרשב"א ח"ו סי' ס"ה שראוייה כל נאנסה תחת בעלה לאיסור מחמת זונה דסוטה ואינ' שחקילה בה תורה לבעלה ישראל נאסרה באיסור זונה דסוטה לבני בעלה כהן. וי"ל שלמד רב ששת מזה לאשת ישראל שנאנסה שפוגמת כל ביאת אוניס ביחס אישותה עם בעלה וכן פי' תורא"ש ברש"י. וי"ל שחולק רבא ולמד מתורת בעלה על לאשת ישראל שנאנסה שנקבעה כל תורת זונה שלה בין לענין זונה דסוטה ובין לענין זונה דכהונה.</p>
--	---	--	---

Separate Story automatically positioned below previous one Defined Using Story Tools

Straddle Head Created by Column Flow

Columns Balanced Separately by Column Flow

Dynamic "Drop Words" Created by Drop Words

**א. רש"י ד"ה פסולה וי"ל אם נת בעלה לא תינשא לכהן עכ"ל.** צ"ב למה לא הראה רש"י מקור איסור כהונה של אשת ישראל שנאנסה. וכמו כן קשה בדבריו לעיל ל"ה ע"א ד"ה אשת ח"ל אינ' שמוחזקת לבעלה וכו' אפי' פסולה לכהונה אם ימות בעלה עכ"ל הרי שלא הראה מקור איסור הכהונה של אשת ישראל שנאנסה. והדבר יותר קשה שם שהאריך רש"י שם בד"ה נפסלו להביא מקור פסול תרומת אשת ישראל שנאנסה מקרא דכי תהיה ולא הביא שום מקור לאיסור כהונתה. ודווקא לפרש שספק בפסול כהונתה על מה שפי' בפסול תרומתה. חדה שלא רמז רש"י לזה ועוד שפני' לחלן ח"ל ע"ב שלא נכלל איסור כהונה בקרא דכי תהיה אלא ע"י ק"י מגרישה ודו"ל לדש"י להבדיל לעיל. וגר' שפירשו תוס' שם ד"ה אע"פ ברש"י ח"ל פ"ה נקמא דשאנקין משום דבת כהן כי תהיה וכו'

# Column Flow

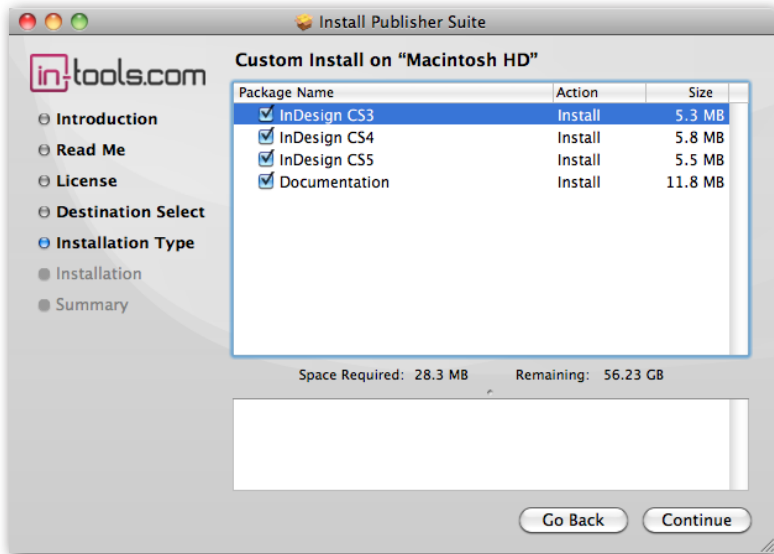
## Installation

*Column Flow* was developed using a product called “APID ToolAssistant” created by Rorohiko. This necessary central controller does a lot of the low-level processing. *If you are interested in the technology behind the development, you can read the addendum on [page 23](#).*

All the necessary components of *Column Flow* are installed in a single step by our installers. The installer includes APID ToolAssistant as well.

To run the installer, simply double click on the installer package on Macintosh or the installer wizard on Windows, and it will walk you through the few steps required.

## Macintosh Install

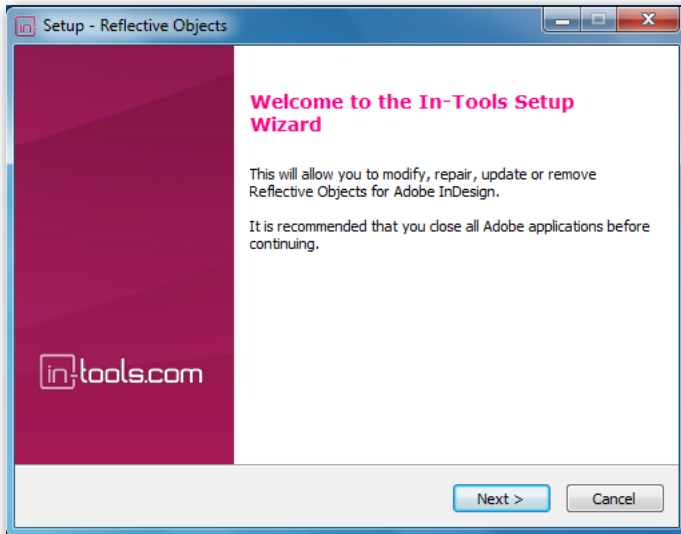


On Macintosh you will be offered the option to install on CS3, CS4, or CS5 as shown above. The option to install any version not currently installed will

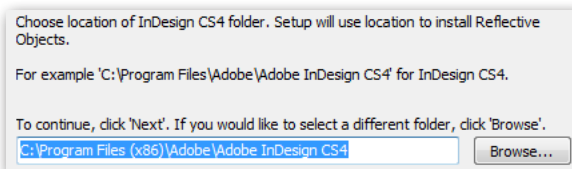
be greyed out. We advise that you keep the option to install the documentation checked.

■➡ *Please note: If your installation of InDesign is not in the default location, you will not be able to install on Macintosh! Before running the installer, make sure InDesign is located in: /Applications/Adobe InDesign CSX.*

### Windows Install



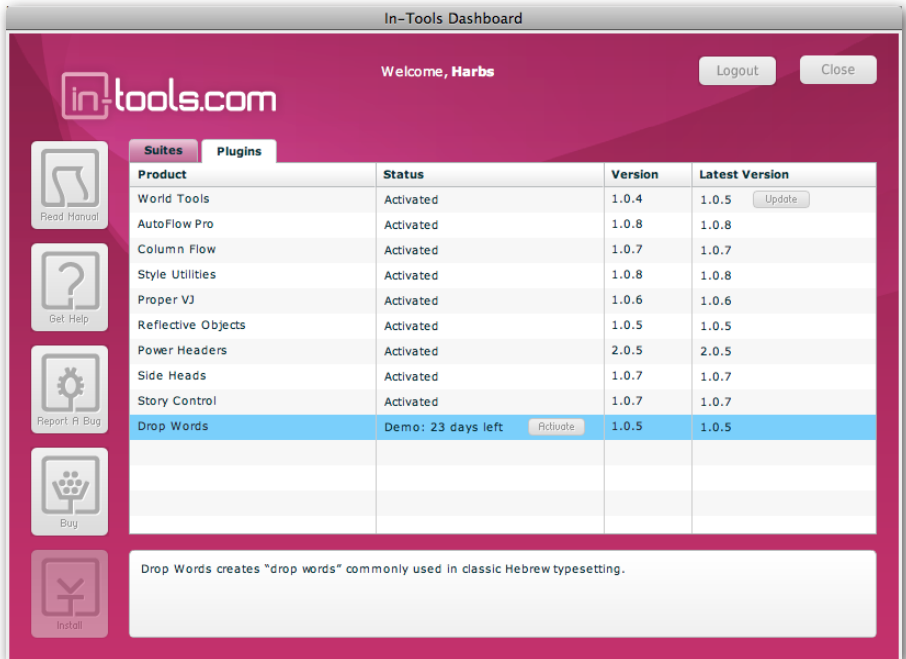
The Windows installer has the additional step that allows you to select your InDesign folder:



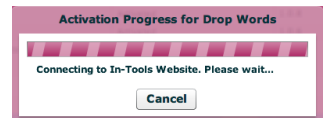
# Column Flow

## Purchasing Licenses and Activation

In-Tools suites and plugin are activated from within InDesign using the In-Tools Dashboard. To access the Dashboard, select “InTools ➔ In-Tools Dashboard...”. That will bring up the following dialog:

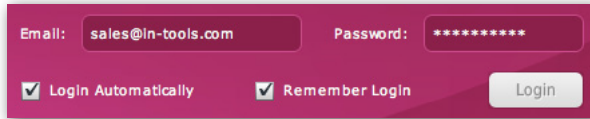


The Dashboard shows all the information you need to know about your plugins (or suites). To activate, simply click on the “Activate” button next to the product you would like to activate. If it is installed as part of a suite, all the components of the suite will be activated as a whole. Wait a few moments while the activation process completes. When it does, you will need to restart InDesign.



## Purchasing Licenses and Activation

To activate, you must have a valid In-Tools account, and you will need to log in from the Dashboard:

A login form with a dark blue background. It features two input fields: 'Email:' with the text 'sales@in-tools.com' and 'Password:' with a masked password '\*\*\*\*\*'. Below the email field is a checkbox labeled 'Login Automatically'. Below the password field is a checkbox labeled 'Remember Login'. To the right of these checkboxes is a light blue 'Login' button.

We recommend keeping both the “Login Automatically” and the “Remember Login” check-boxes checked. This will ensure you are always logged in when the dialog is opened (assuming you have an internet connection). If you try to log in with an email account which is not registered, you will be given the option to create a new account.

You also must have purchased a license of the plugin to activate it. If you have not yet purchased a license, you can do so using the “Buy” button:



For further questions and issues regarding licensing and activation, please refer to the [FAQ web page](#); or for more help, [please visit our forum](#).

# Column Flow

## Before You Start

It is important to understand how *Column Flow* works, and what its limitations are:

1. *Column Flow* does not break columns within a single text frame. A new text frame is created in each place that columns are split or spanned.
2. *Column Flow* does not work dynamically. You must specifically invoke a command to have Column Flow reflow your text when you edit it or re-style it in such a way that text re-flows. For this reason, it is highly recommended that you use *Column Flow* at a point when your text will change very little or not at all.
3. *Column Flow* only works with text that have paragraph styles applied. You cannot locally apply column settings to specific text. All settings must be applied using paragraph styles.
4. *Column Flow* can be used to create boxes or background shading around sections of text, but since it must break text frames to do this, it cannot be used to create boxes or background shading around individual paragraphs in a two column text frame.

## Basic Setup

The setup procedure for Column Flow changed drastically between version 1/CS2 and version 2 for CS3 and later.

In version 1 (or when using CS2 in version 2) all column settings were set by changing the style names to have a number prefix. The number prefix defines the number of columns the text should take up.

In version 2 using CS3 or later, the setup is much more intuitive and much less disruptive.

### Preliminary Setup

Before you start using Column Flow, you'll need to do a couple of things:

1. You must make sure all your text has styles applied to it.
2. Additionally, you should create at least one object style for your text frames which has all the settings you will need (such as: First Baseline Offset, Column Gutter, text inset, stroke color, background color, etc.). You will generally want separate styles for single column frames and multiple column frames, and sometimes separate styles for alternates as well. All these styles should be set up (or at least created) before you set up the Column Flow options.

### Configuration Setup

Once the preliminary set up is done, select InTools → Column Flow → Configure Column Flow. This will bring up the following dialog shown below.

*Please note: The Column Flow configuration settings are document-wide settings. If it is necessary to use different settings in the same document, the settings must be changed before each re-flow.*

The only setup *required* before running *Column Flow* is the selection of the object styles used for single column and multi-column frames. All the other settings are optional.

# Column Flow

The screenshot shows the 'Column Flow Settings' dialog box. It is divided into several sections, each labeled with an orange number:

- Area 1:** 'Main Object Styles:' section. It contains two rows: 'One Column Frame Style:' and 'Multi-Column Frame Style:', both with a '[None]' dropdown and an 'Align to Grid' checkbox.
- Area 2:** 'Alternate Object Styles:' section. It contains two rows: 'One Column Alternate:' and 'Multi-Column Alternate:', both with a '[None]' dropdown and an 'Align to Grid' checkbox.
- Area 3:** 'Options:' section. It includes checkboxes for 'Add/Remove Pages While Flowing?', 'Apply Space Before To One Column Frame', and 'Apply Space Before To Multi-Column Frame'. Below these is a 'Column Balancing:' dropdown set to 'Basic'.
- Area 4:** A sub-section titled 'With Story Strings:' containing radio buttons for 'Start Story On New Page' (selected) and 'Start Story Below Previous'. Below this is a checked checkbox for 'Use Master Page Links'.
- Area 6:** 'Keeps Options:' section. It has a 'Bottom Frame Removal:' section with radio buttons for 'None' (selected), 'Medium', and 'Strict'. At the bottom is a checkbox for 'Set by Style Name'.
- Area 7:** A section containing two input fields: 'Don't Split Frames of' and 'Don't Split Alt. Frames of', both set to '0' and followed by the word 'Columns'. Below these is the text '(You can input a range of numbers.)' and a checked checkbox for 'Honor Keeps While Shrinking Frames'.

Orange callout numbers 1 through 8 point to specific elements: 1 points to Area 1, 2 to Area 2, 3 to Area 3, 4 to Area 4, 5 to 'Use Master Page Links', 6 to Area 6, 7 to Area 7, and 8 to 'Set by Style Name'.

1. In the dialog shown, there are many different areas. Of all the settings, Area #1 and in some cases, area #2 are the most important. In Area #1, select the object styles that will be used for composing the single and multi-column texts. If “Align to Grid” is checked, the text frames will be aligned to the document-wide baseline grid and space will be added between the text frames if necessary. These settings should be set up in the document “Grids” Preferences.

- ➡ The “Align to Grid” option is very useful for ensuring that headings which are normally not aligned to grid, line up with grid-aligned body text at the top of a column.



2. If your document requires the use of alternate styles (such as documents which have boxed sections), make sure to select the correct object styles in area #2.

3. Area #3 has four configuration options:

a) ☒ Add/Remove Pages While Flowing? Enabling “Add/Remove Pages” will cause *Column Flow* to add or remove pages as needed while flowing text. If the option is not checked, text will only be flowed on pages which already have a text frame of the story currently being flowed.

b) ☒ Apply Space Before To One Column Frame The second check-box defines whether the space-before settings of the first paragraph will be used to place the text frame lower on the page. If checked the space-before values will be added to the space between a single column frame, and the text frame above it. The “space after” setting of the previous paragraph is always applied.

c) ☒ Apply Space Before To Multi-Column Frame If this option is checked the space-before values will be added to the space between a multi-column frame, and the text frame above it. The “space after” setting of the previous paragraph is always applied.

d) Column Balancing: Basic  *Column Flow* offers a few different options for balancing of columns at the bottom of a page. If “None” is selected, the text frames at the bottom of a page will always be snapped to the bottom page margin. If “Basic” is selected, the text frame will be shrunk up to balance the columns as best as possible. (The amount the text frame will shrink depends on the check-box in area #7.) If Line Long/Short is selected, *Column Flow* will add or remove a line if the bottom text does not align across columns and changing the number of lines would fix this. Column Flow will only allow a difference of one line length across a single spread of

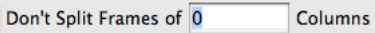
# Column Flow

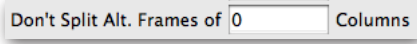
facing pages. This means that if one page is a line long, the facing page will not be a line short, and vice versa.

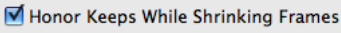
4. The “story string” option is for use in conjunction with *Story Tools*. When flowing “story strings” (set up using *Story Tools*), each consecutive story can start either on a new page, or immediately below the previous one (provided there is enough room on the page). If “Start Story Below Previous” is selected, the alignment and spacing settings will be the same as for within one story.

5. Option #5 is only visible if *AutoFlow Pro* is installed. *AutoFlow Pro* allows for the creation of links between paragraph styles and master pages. If the check-box is checked and the master page links are set up using *AutoFlow Pro* (please refer to the *AutoFlow Pro* documentation for more details), *Column Flow* will automatically apply the correct master pages as it flows the text.

6. Area #6 allows for control of how much text is forced on the bottom of a page. InDesign allows keeps options to be broken, when honoring them will cause a text column to be empty. Column Flow gives three options of adherence to keeps options for text frames which fall on the bottom of a page. “None” will leave any text frames that can be created on the bottom of the page, even if doing so will violate keeps restrictions. “Medium”, will allow text frames that don’t violate keeps at the end of the frame, but allow keeps to be broken between columns. “Strict” will not allow any keeps options to be broken in the bottom text frame, and will remove any bottom text frames that will violate any of the keeps settings.

7. Area #7 has three different settings. The first two allow for sections to be kept together.  The first option is for text

which uses the main object style.  The second option is for text which uses the alternate object styles. For both fields, you can input a range of column numbers. Valid formats are comma and/or hyphen separated numbers. For example: “2-4” will cause all text of one, two, or three columns to be kept together. “1,3-5” will cause all text of 1, 3, 4, or 5 columns to be kept together.

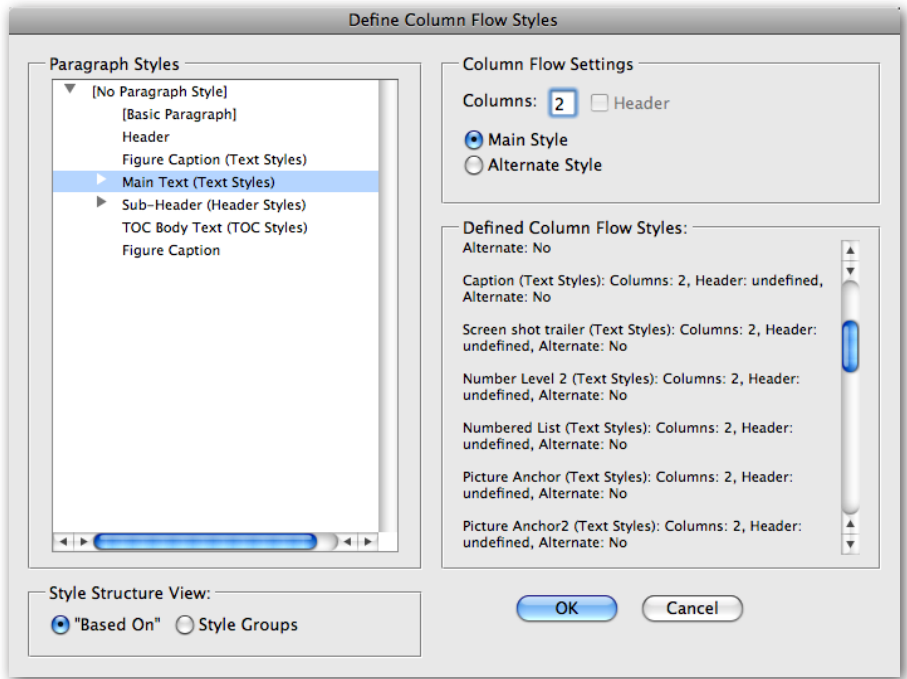
 The third option defines how much *Column Flow* will shrink text frames after breaking the text. If the check-box is checked, *Column Flow* will only shrink the frame as much as possible without breaking keeps settings. If it is unchecked, the text frames will be shrunk as much as possible.

8. Option #8 allows for legacy style names to be used to determine the number of columns text takes up. If the check-box is checked, the number of columns will be determined by the style name instead of the settings set by the styles dialog.

## Setting Up Styles

In the latest versions of Column Flow, defining style settings has become very easy! To access the style dialog, select InTools → Column Flow → Column Flow Styles.... This will bring up the dialog shown below.

# Column Flow



There's only three different settings are set in this dialog: Columns count, Header, and Main/Alternate Style. You must input a column count for the styles, as well as select whether the main style should be used, or the alternate. The Header option is only applicable if the column count is 1.

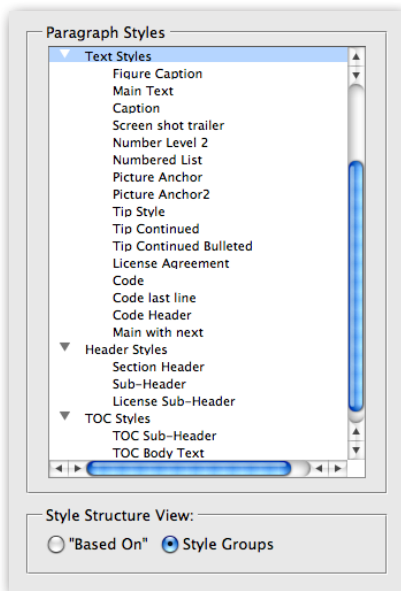
You can scroll through the "Defined Column Flow Styles" list to quickly see which styles have which settings.

The *Column Flow* Style dialog presents the object styles of the current document in a tree format. There are two distinct tree structure views available. There is the "Based On" view and the "Style Groups" view. You can switch between the two views at any time by clicking on the appropriate radio button.

### Style Groups View

The “Style Groups” view presents the styles in an expandable tree, with a folder structure similar to the folder structure of InDesign’s Object Style panel. If you organize your object styles in style groups, you can use this view to select either individual styles or entire style groups.

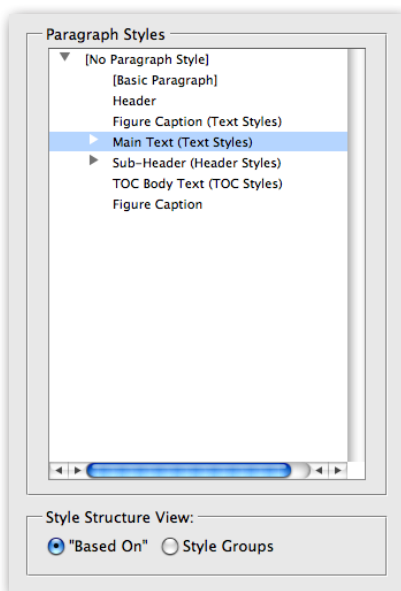
When a style group is selected, all the styles (and sub-group styles) in the selected style group will be associated with the *Column Flow* setting you choose.



### Based On View

The “Based On” view presents a tree structure of all the styles, in which each style can be seen in its relation to the style upon which it is based. The root of the style tree will always be the [None] style as all styles are ultimately based on [None].

When the styles are viewed in the “Based-On” structure, all styles which are based on the selected style will be associated with the *Column Flow* setting you choose.



# Column Flow

## Running Column Flow

To Run *Column Flow*, You simply select InTools → Column Flow → Flow... All flowing is done to fit within the page margins and can be flowed on five different levels.

1. **Current Page:** This option flows the selected story on the current page, and fits as much text as possible using the current flow settings. It uses the selected frame as the vertical starting point. This option should be used if a lot of manual tweaking is to be done.
  2. **Rest of Story:** This option will flow the rest of the story starting from the selected text frame. Pages will be added or removed if this option is selected in the Column Flow Options.
  3. **Whole Story:** This will re-flow the entire selected story.
  4. **Story String From Selection:** This option will be grayed-out, unless a story string was set up using the Story Tools plug-in. If the Story String was properly set up, this option will flow the entire string starting from the selected frame. Story String Flow will always add and remove pages as necessary, regardless of the settings in the Column Flow Settings.
  5. **Whole Story String:** This will flow the Story String (if set up) starting from the first story in the string.
- ➡ *Column Flow* works much quicker when it creates pages and text frames on the fly. It is therefore recommended when flowing large amounts of text, to remove all subsequent pages, and run *Column Flow* on overset text.

- To automatically create two multiple column frames one immediately after the other: Insert a blank one column paragraph with a leading of zero. This paragraph will act as a “column breaker”, and will cause the text above it to be balanced across the columns. The text after the blank paragraph will be balanced independently.

## Addendum

### What is “APID ToolAssistant”?

Classically, there are only two ways to automate InDesign. One way is by scripting. Scripts are a series of commands written in one of the three supported scripting languages — AppleScript for the Macintosh, Visual Basic for Windows, or ExtendScript for both platforms. ExtendScript is Adobe’s version of Javascript. For scripts to run, they must be placed in the application script folder and explicitly run. For automation to be truly automatic, it requires “event processing”. This means that certain events trigger specific processes to take place. There is limited event-triggered scripting available in CS3.

To achieve true integration, plug-ins must be programmed using C++. Developing C++ plug-ins is a very involved, and lengthy process. APID ToolAssistant is a plug-in which allows very fine grained event processing using ExtendScript. It allows for creation of advanced plug-ins in a fraction of the time required when programming using C++. It also aids in the creation of hybrid plug-ins which mix ExtendScript and C++ for maximum efficiency.

Without the APID ToolAssistant, it would not have been possible to create the collection of plug-ins we offer in the same amount of development

# Column Flow

time. This increased programming efficiency means more functionality for the end user and lower prices.

Additionally, APID ToolAssistant offers the ability to attach scripts to specific objects. These attached scripts can be run automatically when triggered by specific events. Anyone who has a licensed version of the APID ToolAssistant plug-in installed can create and use these attached scripts. There are also additional scripting properties and methods which are usable by scripters. For more information see Rorohiko's web site.



# Acknowledgements

We wish to thank the many people who have helped make In-Tools plug-ins possible.

To those who give graciously of their time and expertise on the InDesign scripting forum: thank you for introducing us to automating within InDesign. Most specifically, Dave Saunders, Olav Kvern, and Peter Kahrel.

To Kris Coppieters, thank you for your incredible support throughout the entire development process. Your help with product improvements and with coding tips and techniques has been incredible. Your support has been above and beyond what we could have reasonably expected. It has really been a pleasure working together. Thank you.

To all our beta testers, thank you for the valuable input which helped shaped our plug-ins. To Brad Walrod: a special thank you for your unrelenting comments and suggestions. To Peter Gold and Raphael Freeman: thank you for your many useful suggestions.

# Column Flow

## License Agreement

**Please read the following document carefully!**

This is a legal agreement (the Agreement) between you and Print Israel LLC (In-Tools), the developer of the In-Tools software. This Agreement pertains to your use of the In-Tools software and documentation which are provided to you by In-Tools (collectively, the Software). By copying, installing, or otherwise using the Software, you accept all the terms and provisions of the Agreement.

### Terms of Use

The provisions of the [In-Tools Privacy Policy](#) are incorporated herein and made a part hereof.

### License

This Agreement grants you a personal, non-exclusive, non-transferable, non-sublicensable right to use one copy of the Software for use on a single computer and/or workstation for each license that you purchase. You may try the Software before purchasing a license, for the specified amount of time in the materials accompanying the Software. YOU UNDERSTAND AND AGREE THAT BY USING THE TRIAL SOFTWARE, AFTER THE AMOUNT OF TIME YOU MAY NOT BE ABLE TO CONTINUE TO USE THE SOFTWARE UNLESS YOU PURCHASE A LICENSE.

In-Tools reserves all rights in the Software not expressly granted herein, including without limitation ownership and proprietary rights.

### License Restrictions

You may not reverse engineer, decompile or disassemble the Software. The restrictions contained herein apply equally to any updates that may be provided to you by In-Tools.

### Intellectual Property Rights and Third Party Materials

All service marks, logos, trade names, trade dress, and trademarks of In-Tools (collectively Marks) are the exclusive property of In-Tools and nothing in this Agreement shall grant you the license to use such Marks. All intellectual property rights in the

Software are owned exclusively by In-Tools and are protected by United States of America copyright laws and international copyright treaty provisions. Any violation of the terms set forth herein is expressly prohibited by law and may result in severe civil and criminal penalties.

### Disclaimer of Warranties

ALL SOFTWARE PROVIDED BY IN-TOOLS ARE PROVIDED AS IS. IN-TOOLS AND ITS AGENTS, PARTNERS, OR EMPLOYEES MAKE NO REPRESENTATION OR WARRANTY TO YOU OR ANY OTHER PERSON OR ENTITY, WHETHER EXPRESS, IMPLIED, OR STATUTORY, AS TO THE DESCRIPTION, QUALITY, TITLE, NON-INFRINGEMENT, MERCHANTABILITY, COMPLETENESS, OR FITNESS FOR A PARTICULAR USE OR PURPOSE AS TO THE SOFTWARE PROVIDED TO YOU, OR AS TO ANY OTHER MATTER, ALL SUCH WARRANTIES HEREBY BEING EXPRESSLY EXCLUDED AND DISCLAIMED.

NEITHER IN-TOOLS NOR ANY OF ITS AGENTS, PARTNERS, OR EMPLOYEES WARRANTS THAT THE SOFTWARE OR SERVICES ARE ERROR FREE OR WILL OPERATE WITHOUT CAUSING LOSS OR INTERRUPTION YOUR COMPUTER USAGE OR DATA. YOU ASSUME TOTAL RESPONSIBILITY AND RISK FOR YOUR USE OF THE SOFTWARE.

### Limitation of Liability

IN NO EVENT SHALL IN-TOOLS, ITS AFFILIATES, SUBSIDIARIES, PARENT COMPANIES, AGENTS, NETWORK SERVICE PROVIDERS, PARTNERS, OR EMPLOYEES BE LIABLE TO YOU OR ANY THIRD PARTY IN ANY RESPECT FOR ANY COSTS OR DAMAGES ARISING EITHER DIRECTLY OR INDIRECTLY FROM THE USE OF IN-TOOLS SOFTWARE INCLUDING WITHOUT LIMITATION ANY ACTUAL, INCIDENTAL, CONSEQUENTIAL, EXEMPLARY, PUNITIVE, RELIANCE OR SPECIAL DAMAGES, OR FOR ANY LOSS OF REVENUE, PROFITS, USE, DATA, GOODWILL OR BUSINESS OPPORTUNITIES OF ANY KIND OR NATURE WHATSOEVER, ARISING IN ANY

# Column Flow

MANNER FROM ANY CAUSE OF ACTION OR CLAIM RELATING TO THIS AGREEMENT, TO THE SERVICES PROVIDED BY IN-TOOLS OR TO THE USE OF THE SOFTWARE. THIS LIMITATION OF LIABILITY APPLIES EQUALLY TO ANY THIRD PARTIES WITH WHOM IN-TOOLS ENTERS INTO A BINDING AGREEMENT TO MARKET, DISPLAY AND/OR DISTRIBUTE THE SOFTWARE TO END USERS AND SUCH THIRD PARTIES SHALL NOT BE LIABLE TO YOU OR ANY OTHER THIRD PARTY FOR ANY OF THE DAMAGES SET FORTH ABOVE.

## Export Control Laws.

You agree to comply with all laws, rules and regulations applicable to the export of the Software. Specifically, you shall not export, re-export or transship the Software, or the direct product thereof, in violation of any United States laws and regulations which may from time to time be applicable. None of the Software or underlying information or technology may be downloaded or otherwise exported or re-exported (i) into, or to a national or resident of, Cuba, Iran, Iraq, Libya, North Korea, Sudan, Syria or any other country to which the U.S. has embargoed goods; or (ii) to anyone on the U.S. Treasury Department's list of Specially Designated Nationals or the U.S. Commerce Department's Table of Denial Order. By downloading or using the Software, you are agreeing to the aforementioned and you are representing and warranting that you are not located in, under the control of, or a national or resident of any such country or on any such list.

## Jurisdiction and Other Provisions

This Agreement and the relationship between In-Tools and you shall be governed in accordance with the laws of the State of New York. Any dispute between you and In-Tools regarding this Agreement will be subject to the exclusive jurisdiction of the state and federal courts in the State of New York. You agree to submit to exclusive jurisdiction in the State of New York, and you expressly waive all defenses to jurisdiction.

This Agreement is the entire agreement between you and In-Tools relating to your use of the Software and supersedes any other communications or advertising with respect

to the Software. If any provision of this Agreement is held invalid, the remainder of this Agreement will continue in full force and effect. In-Tools failure to insist upon or enforce strict performance of any provision of this Agreement shall not be construed as a waiver of any provision or right. Neither the course of conduct between the parties nor trade practice shall act to modify any provision of this Agreement. In-Tools may assign its rights and duties under this Agreement to any party at any time without notice to you.

### Modifications of Agreement

In-Tools may modify this Agreement at any time without providing notice to you. Such modification will be made by posting a revised agreement on its web site and such modification shall be deemed effective immediately upon posting of the modified Agreement. Your continued access or use of the Software or Services shall be deemed your acceptance of the modified Agreement. You agree to check our web site periodically to review such modifications.

### Termination or Modifications of Software

You may terminate this Agreement at any time. In-Tools may immediately terminate the Agreement if you breach any representation, warranty, agreement or obligation contained or referred to in this Agreement. Upon termination, you must dispose of the Software and all copies or versions of the Software by destroying the Software. In-Tools reserves the right to modify the Software at any time without providing notice to you. In-Tools right to modify the Software applies to all or any aspect of the Software.

YOU ACKNOWLEDGE THAT YOU HAVE READ THIS AGREEMENT AND UNDERSTAND IT, AND THAT, BY USING THE SOFTWARE, WEB SITE, YOU AGREE TO BE BOUND BY ITS TERMS AND CONDITIONS.