

Drop Words

**CS3/CS4/CS5
InDesign Plug-in**

version 1.0.5

last revision: January 9, 2011

Drop

Words

Contents

3 About Drop Words

4 Installation

Macintosh Install

Windows Install

6 Purchasing Licenses and Activation

8 Drop Words #1

Setup

Running Drop Words #1

10 Drop Words #2

Setup

Using Drop Words 2

Drop Word Re-formatting

Removing Drop Words

Applying Drop Words to Selected Text

14 Addendum

What is “APID ToolAssistant”?

16 Acknowledgements

17 License Agreement

About Drop Words

“Drop Words” is a technique used extensively in Hebrew typesetting. Hebrew drop words differ from standard drop caps in a number of ways. Firstly, they are applied to the whole word, while standard drop caps are generally applied to just the first letter. Secondly, they are used on (almost) every paragraph. This is something which makes manual setting of the drops unpractical. Lastly, the drops are “virtual drops”. With normal drop caps, the characters which are dropped are enlarged to take up the number of lines for which they are set. Drop words, although often slightly larger than the rest of the text, only take up the first line. The line below is indented to start directly below the second word.

Creating all this formatting manually is a very tedious process. This plug-in was created to automate the process of creating these virtual drop words. There is a script originally written by Dave Saunders, and ultimately improved upon by us which helps in the automation. The script can be downloaded from [here](#). However you may find it cumbersome and inefficient to use in production work, especially when there is a need to update them at a later point in time. Additionally the script can take a relatively long time when run on long documents. *Drop Words* was completely re-written to enable much more extensive automation and ease of use, as well as being very quick to run. The typographical quality of the *dynamic* drop words created by the *Drop Words* plug-in is also superior to that of the script.

Drop Words

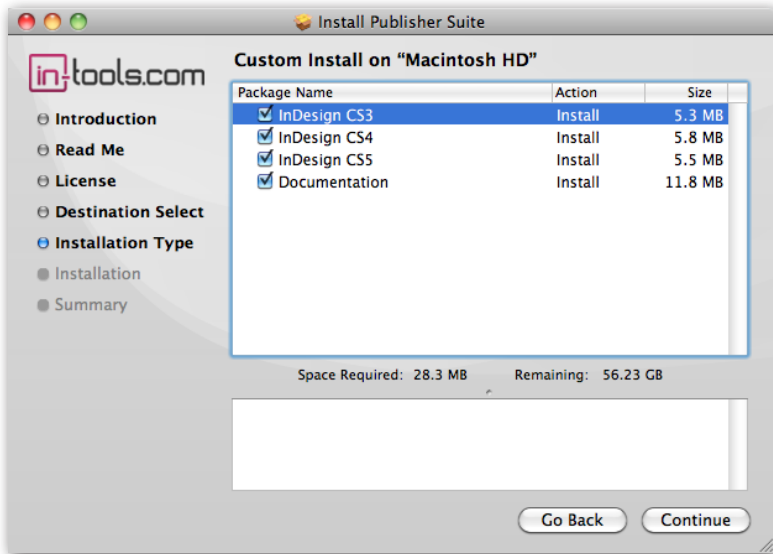
Installation

Drop Words was developed using a product called “APID ToolAssistant” created by Rorohiko. This necessary central controller does a lot of the low-level processing. *If you are interested in the technology behind the development, you can read the addendum on [page 14](#).*

All the necessary components of *Drop Words* are installed in a single step by our installers. The installer includes APID ToolAssistant as well.

To run the installer, simply double click on the installer package on Macintosh or the installer wizard on Windows, and it will walk you through the few steps required.

Macintosh Install

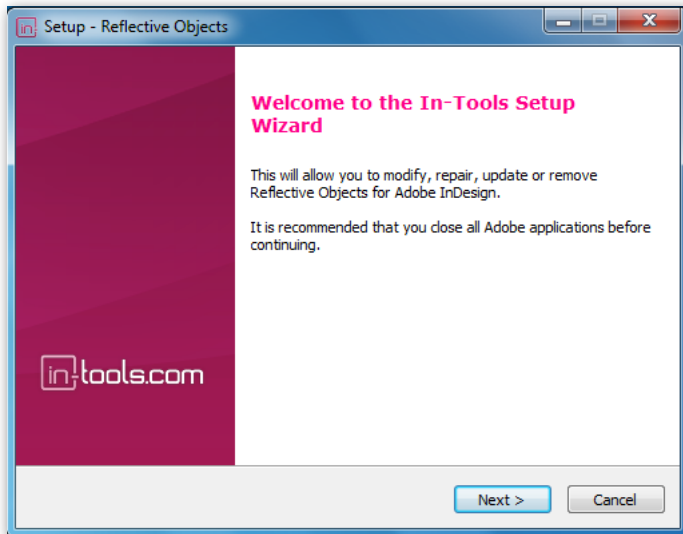


On Macintosh you will be offered the option to install on CS3, CS4, or CS5 as shown above. The option to install any version not currently installed will

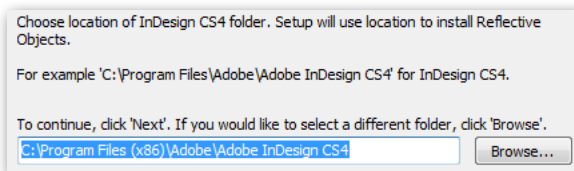
be greyed out. We advise that you keep the option to install the documentation checked.

▣▣▣▣➔ *Please note: If your installation of InDesign is not in the default location, you will not be able to install on Macintosh! Before running the installer, make sure InDesign is located in: /Applications/Adobe InDesign CSX.*

Windows Install



The Windows installer has the additional step that allows you to select your InDesign folder:



Drop Words

Purchasing Licenses and Activation

In-Tools suites and plugin are activated from within InDesign using the In-Tools Dashboard. To access the Dashboard, select “InTools → In-Tools Dashboard...”. That will bring up the following dialog:

The screenshot shows the In-Tools Dashboard interface. At the top, it says "Welcome, Harbs" and has "Logout" and "Close" buttons. The "in-tools.com" logo is on the left. Below the logo are several icons: "Read Manual", "Get Help", "Report A Bug", "Buy", and "Install". The main area is divided into "Suites" and "Plugins" tabs. A table lists various products with their status, version, and latest version. The "Drop Words" product is highlighted in blue and has an "Activate" button next to it. Below the table, there is a description: "Drop Words creates 'drop words' commonly used in classic Hebrew typesetting."

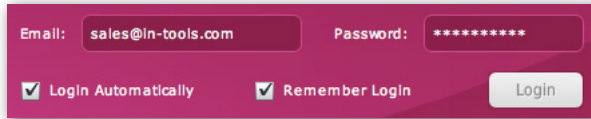
Product	Status	Version	Latest Version
World Tools	Activated	1.0.4	1.0.5 <input type="button" value="Update"/>
AutoFlow Pro	Activated	1.0.8	1.0.8
Column Flow	Activated	1.0.7	1.0.7
Style Utilities	Activated	1.0.8	1.0.8
Proper VJ	Activated	1.0.6	1.0.6
Reflective Objects	Activated	1.0.5	1.0.5
Power Headers	Activated	2.0.5	2.0.5
Side Heads	Activated	1.0.7	1.0.7
Story Control	Activated	1.0.7	1.0.7
Drop Words	Demo: 23 days left <input type="button" value="Activate"/>	1.0.5	1.0.5

The Dashboard shows all the information you need to know about your plugins (or suites). To activate, simply click on the “Activate” button next to the product you would like to activate. If it is installed as part of a suite, all the components of the suite will be activated as a whole. Wait a few moments while the activation process completes. When it does, you will need to restart InDesign.

The screenshot shows a dialog box titled "Activation Progress for Drop Words". It features a progress bar at the top, which is currently empty. Below the progress bar, it says "Connecting to In-Tools Website. Please wait...". At the bottom of the dialog, there is a "Cancel" button.

Purchasing Licenses and Activation

To activate, you must have a valid In-Tools account, and you will need to log in from the Dashboard:

A screenshot of a login form with a dark red background. It features two input fields: "Email:" with the text "sales@in-tools.com" and "Password:" with "*****". Below the fields are two checked checkboxes: "Login Automatically" and "Remember Login". A "Login" button is positioned to the right of the checkboxes.

We recommend keeping both the “Login Automatically” and the “Remember Login” check-boxes checked. This will ensure you are always logged in when the dialog is opened (assuming you have an internet connection). If you try to log in with an email account which is not registered, you will be given the option to create a new account.

You also must have purchased a license of the plugin to activate it. If you have not yet purchased a license, you can do so using the “Buy” button:



For further questions and issues regarding licensing and activation, please refer to the [FAQ web page](#); or for more help, [please visit our forum](#).

Drop Words

Drop Words #1

There are two versions of the drop words function available using the *Drop Words* plug-in. They are named “Drop Words”, and “Drop Words 2”. The setup and usage of the two versions are very different and will be explained separately.

Setup

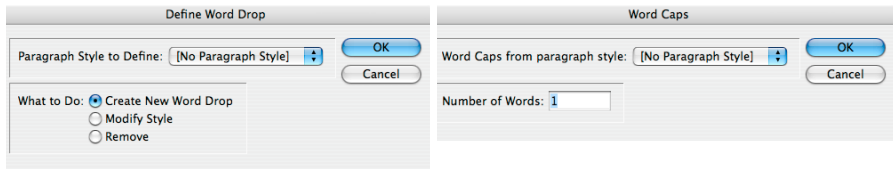
Drop Words uses paragraph styles as the basis for creating the drop words. You must set up your document with styles for the drop words to properly function. “Drop Words #1” creates drop words using the standard drop caps function of InDesign. To properly create the drop words, the drop caps settings in your paragraph styles must be properly set up. The paragraph style should have the drop caps set to drop two lines. The number of characters set to drop is unimportant. It will be adjusted to the correct number of characters by *Drop Words*.

To ensure that the first word(s) retain the proper size and vertical position, the paragraph style should be set up using a character style for the drop cap. The drop cap character style should be a reduced size. The exact size would depend upon the point size and leading of the paragraph. Additionally, the baseline shift will need to be moved up.

Note: The size of the drop cap characters can be reduced by either changing the point size, or by using glyph scaling. The glyph scaling method will work in CS and CS2. In CS3, there is a bug, which does not allow applying the glyph scaling in a drop cap, so the point size must be changed instead.

Running Drop Words #1

Before applying the drop words in a document, you must select which paragraph styles should have the drop words applied. The styles to receive the drop words can be added, modified, or removed. Here's the dialogs for selecting the styles:



In the first dialog, for each paragraph style to receive the drop words, click “Create New Word Drop”. If you would like to modify an existing definition, select the appropriate style, and click “Modify”. Creating a new drop word, or modifying an existing one, will bring up the second dialog. The options for setting the drop word definitions are very straight-forward. Select the paragraph style, and the number of words to drop.

Once all the styles are set up, apply the drops to the specified number of words, by simply selecting: InTools → Drop Words → Run Drop Words. This will update all the paragraphs in the document.

Please note: All settings applied by Drop Words #1 are static. When the drop words are applied, the paragraph styles will appear as overridden. (They will have the little “plus” sign near the style name.) Clearing overrides will undo the effects of Drop Words. Additionally, changes to the drop word text will not cause a dynamic update. Either one of these situations necessitate running Drop Words again.

Drop Words

Drop Words #2

Drop Words 2 is a complete rewrite on the concept of drop words. It works using an entirely different method, and requires a totally different setup. The reason we included both functions, is there are advantages to both ways. (Although the advantages to the second method probably outweigh the disadvantages — you decide!)

The advantages to Drop Words #1 are as follows:

- Drop words #1 can be run on text before it is properly placed. It doesn't matter if the text is over-set, etc. Drop Words #2 requires the text to be set. At the very minimum it must not be over-set, but ideally it should be set in its final formatting before creating the drop words.
- Drop Words #1 can be vertically justified using InDesign's built in vertical justification, while Drop Words #2 cannot. To vertically justify text formatted using Drop Words #2, you can use our Proper VJ plug-in instead.
- Drop Words #1 can be created on the whole document at once (assuming the styles are previously chosen), while Drop Words #2 must be run for each style separately.
- Drop Words #2 will only work using CS2 and higher.

The advantages of Drop Words #2 are as follows:

- The spacing between the drop word and the rest of the text is adjusted to match the spacing in the rest of the line. Spaces in drop caps (used in Drop Words #1) are fixed spaces, and not adjusted by the justification of the paragraph. The flexible spacing in Drop Words #2 creates a much more unified look.
- The drop words in Drop Words #2 are dynamic. This means that editing the drop words will automatically adjust the size of the drop words. Deleting the drop word text will remove the drop words entirely.
- Drop Words #2 does not override the paragraph style settings, so clearing overrides will not effect the drop

Drop Words #2

words. • Any drop caps bugs in InDesign (and there are quite a few...) will affect Drop Words #1 but not Drop Words #2. • The drop words in Drop Words #2 require no resizing or baseline shifting.

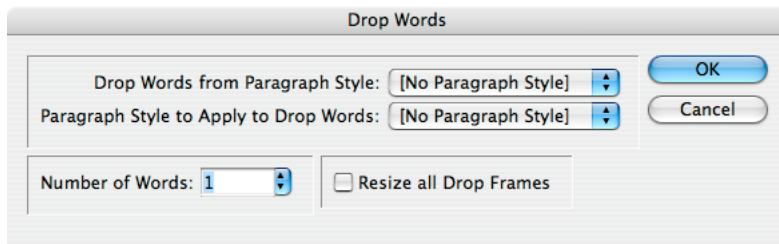
Setup

Since drop words are only used in right to left text, *Drop Words 2* was designed to function on right-to-left paragraphs only. If you try to run it on left-to-right paragraphs, nothing will happen.

To run *Drop Words 2*, you must set up two different paragraph styles. The first style will apply formatting to the parent paragraph, while the second one will apply the formatting to the drop words alone. If there is more than one word in the drop word, the second style can be set up to apply all the formatting to the different words using nested styles. The second style should be set up using the true point size and baseline position (unlike Drop Words #1).

Using Drop Words 2

To create “Drop Words 2” drop words, simply select: InTools → Drop Words → Run Drop Words 2. This must be repeated for each paragraph style.



Above is the dialog used for creating “Drop Words 2” drop words. The options are self-explanatory. The top drop down list is for selecting the parent

Drop Words

paragraph which should receive the drop words. The second drop down list is for selecting the paragraph style to apply to the words which are to be dropped. In the “Number of Words” input field, select the number of words to drop. “The Resize all Drop Frames” option will force an update on all existing drop words in the selected style. It is not usually necessary, but the option offers a way to force the re-flow.

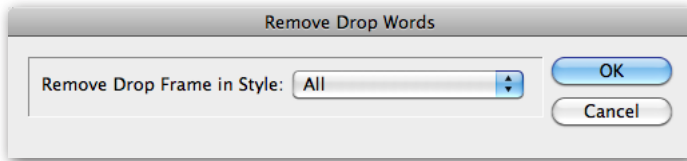
Drop Word Re-formatting

Once the drop words are created, the size of the drop will be adjusted automatically any time the drop words are edited. Depending on the number of drop words, and the processor speed of the computer, the updates can take some time. If the text is reformatted in a way that affects a number of drop words, you will be prompted to okay the updates. If you cancel the updates, make sure to select “Force Update” to fix the spacing (and possibly overset drop words). You can force the update by selecting InTools → Drop Words → Force Update Drop Words 2.

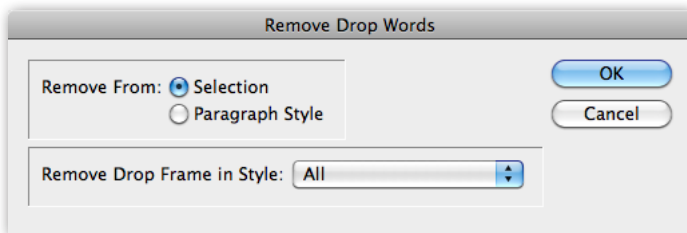
Please note: Do to an unresolved issue with the Drop Words plug-in, it is possible to sometimes be prompted more than once in rapid succession after changing formatting. If there was only one change of formatting, it is safe to dismiss all prompts following the first one.

Removing Drop Words

The drop words are created as inline frames in the story stream. The text of the drop words themselves are actually a separate story. If the text is exported to be edited in an external program, the drop words must be removed first. To remove the drop words simply select InTools → Drop Words → Undo Drop Words 2. If no text is selected, you will be presented with the following dialog:



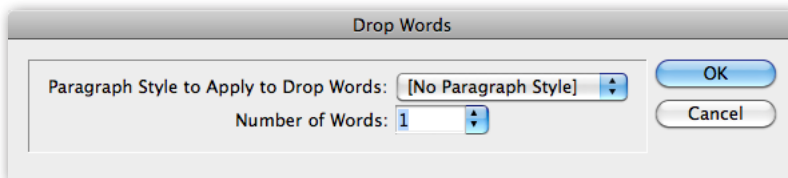
You have the option of removing the drop words from either the whole document, or only from a specific paragraph style. IF there is text selected, you will have an additional option as shown in the dialog below:



If “Selection” is selected, only the drop words in the selected text will be removed.

Applying Drop Words to Selected Text

If you need to apply the Drop Words to specific text, that can be done as well. Select “InTools → Drop Words → Drop Selected Paragraphs...” and select the number of words to drop, and style to use for the Drop Words:



Drop Words

Addendum

What is “APID ToolAssistant”?

Classically, there are only two ways to automate InDesign. One way is by scripting. Scripts are a series of commands written in one of the three supported scripting languages — AppleScript for the Macintosh, Visual Basic for Windows, or ExtendScript for both platforms. ExtendScript is Adobe’s version of javascript. For scripts to run, they must be placed in the application script folder and explicitly run. For automation to be truly automatic, it requires “event processing”. This means that certain events trigger specific processes to take place. There is limited event-triggered scripting available in CS3.

To achieve true integration, plug-ins must be programmed using C++. Developing C++ plug-ins is a very involved, and lengthy process. APID ToolAssistant is a plug-in which allows very fine grained event processing using ExtendScript. It allows for creation of advanced plug-ins in a fraction of the time required when programming using C++. It also aids in the creation of hybrid plug-ins which mix ExtendScript and C++ for maximum efficiency.

Without the APID ToolAssistant, it would not have been possible to create the collection of plug-ins we offer in the same amount of development time. This increased programming efficiency means more functionality for the end user and lower prices.

Additionally, APID ToolAssistant offers the ability to attach scripts to specific objects. These attached scripts can be run automatically when triggered by specific events. Anyone who has a licensed version of the APID ToolAssistant plug-in installed can create and use these attached scripts. There

Addendum

are also additional scripting properties and methods which are usable by scripters. For more information see Rorohiko's web site.

Drop Words

Acknowledgements

We wish to thank the many people who have helped make In-Tools plug-ins possible.

To those who give graciously of their time and expertise on the InDesign scripting forum: thank you for introducing us to automating within InDesign. Most specifically, Dave Saunders, Olav Kvern, and Peter Kahrel.

To Kris Coppieters, thank you for your incredible support throughout the entire development process. Your help with product improvements and with coding tips and techniques has been incredible. Your support has been above and beyond what we could have reasonably expected. It has really been a pleasure working together. Thank you.

To all our beta testers, thank you for the valuable input which helped shaped our plug-ins. To Brad Walrod: a special thank you for your unrelenting comments and suggestions. To Peter Gold and Raphael Freeman: thank you for your many useful suggestions.

License Agreement

Please read the following document carefully!

This is a legal agreement (the Agreement) between you and Print Israel LLC (In-Tools), the developer of the In-Tools software. This Agreement pertains to your use of the In-Tools software and documentation which are provided to you by In-Tools (collectively, the Software). By copying, installing, or otherwise using the Software, you accept all the terms and provisions of the Agreement.

Terms of Use

The provisions of the [In-Tools Privacy Policy](#) are incorporated herein and made a part hereof.

License

This Agreement grants you a personal, non-exclusive, non-transferable, non-sublicensable right to use one copy of the Software for use on a single computer and/or workstation for each license that you purchase. You may try the Software before purchasing a license, for the specified amount of time in the materials accompanying the Software. YOU UNDERSTAND AND AGREE THAT BY USING THE TRIAL SOFTWARE, AFTER THE AMOUNT OF TIME YOU MAY NOT BE ABLE TO CONTINUE TO USE THE SOFTWARE UNLESS YOU PURCHASE A LICENSE.

In-Tools reserves all rights in the Software not expressly granted herein, including without limitation ownership and proprietary rights.

License Restrictions

You may not reverse engineer, decompile or disassemble the Software. The restrictions contained herein apply equally to any updates that may be provided to you by In-Tools.

Intellectual Property Rights and Third Party Materials

All service marks, logos, trade names, trade dress, and trademarks of In-Tools (collectively Marks) are the exclusive property of In-Tools and nothing in this Agreement shall grant you the license to use such Marks. All intellectual property rights in the

Drop Words

Software are owned exclusively by In-Tools and are protected by United States of America copyright laws and international copyright treaty provisions. Any violation of the terms set forth herein is expressly prohibited by law and may result in severe civil and criminal penalties.

Disclaimer of Warranties

ALL SOFTWARE PROVIDED BY IN-TOOLS ARE PROVIDED AS IS. IN-TOOLS AND ITS AGENTS, PARTNERS, OR EMPLOYEES MAKE NO REPRESENTATION OR WARRANTY TO YOU OR ANY OTHER PERSON OR ENTITY, WHETHER EXPRESS, IMPLIED, OR STATUTORY, AS TO THE DESCRIPTION, QUALITY, TITLE, NON-INFRINGEMENT, MERCHANTABILITY, COMPLETENESS, OR FITNESS FOR A PARTICULAR USE OR PURPOSE AS TO THE SOFTWARE PROVIDED TO YOU, OR AS TO ANY OTHER MATTER, ALL SUCH WARRANTIES HEREBY BEING EXPRESSLY EXCLUDED AND DISCLAIMED.

NEITHER IN-TOOLS NOR ANY OF ITS AGENTS, PARTNERS, OR EMPLOYEES WARRANTS THAT THE SOFTWARE OR SERVICES ARE ERROR FREE OR WILL OPERATE WITHOUT CAUSING LOSS OR INTERRUPTION YOUR COMPUTER USAGE OR DATA. YOU ASSUME TOTAL RESPONSIBILITY AND RISK FOR YOUR USE OF THE SOFTWARE.

Limitation of Liability

IN NO EVENT SHALL IN-TOOLS, ITS AFFILIATES, SUBSIDIARIES, PARENT COMPANIES, AGENTS, NETWORK SERVICE PROVIDERS, PARTNERS, OR EMPLOYEES BE LIABLE TO YOU OR ANY THIRD PARTY IN ANY RESPECT FOR ANY COSTS OR DAMAGES ARISING EITHER DIRECTLY OR INDIRECTLY FROM THE USE OF IN-TOOLS SOFTWARE INCLUDING WITHOUT LIMITATION ANY ACTUAL, INCIDENTAL, CONSEQUENTIAL, EXEMPLARY, PUNITIVE, RELIANCE OR SPECIAL DAMAGES, OR FOR ANY LOSS OF REVENUE, PROFITS, USE, DATA, GOODWILL OR BUSINESS OPPORTUNITIES OF ANY KIND OR NATURE WHATSOEVER, ARISING IN ANY

License Agreement

MANNER FROM ANY CAUSE OF ACTION OR CLAIM RELATING TO THIS AGREEMENT, TO THE SERVICES PROVIDED BY IN-TOOLS OR TO THE USE OF THE SOFTWARE. THIS LIMITATION OF LIABILITY APPLIES EQUALLY TO ANY THIRD PARTIES WITH WHOM IN-TOOLS ENTERS INTO A BINDING AGREEMENT TO MARKET, DISPLAY AND/OR DISTRIBUTE THE SOFTWARE TO END USERS AND SUCH THIRD PARTIES SHALL NOT BE LIABLE TO YOU OR ANY OTHER THIRD PARTY FOR ANY OF THE DAMAGES SET FORTH ABOVE.

Export Control Laws.

You agree to comply with all laws, rules and regulations applicable to the export of the Software. Specifically, you shall not export, re-export or transship the Software, or the direct product thereof, in violation of any United States laws and regulations which may from time to time be applicable. None of the Software or underlying information or technology may be downloaded or otherwise exported or re-exported (i) into, or to a national or resident of, Cuba, Iran, Iraq, Libya, North Korea, Sudan, Syria or any other country to which the U.S. has embargoed goods; or (ii) to anyone on the U.S. Treasury Department's list of Specially Designated Nationals or the U.S. Commerce Department's Table of Denial Order. By downloading or using the Software, you are agreeing to the foregoing and you are representing and warranting that you are not located in, under the control of, or a national or resident of any such country or on any such list.

Jurisdiction and Other Provisions

This Agreement and the relationship between In-Tools and you shall be governed in accordance with the laws of the State of New York. Any dispute between you and In-Tools regarding this Agreement will be subject to the exclusive jurisdiction of the state and federal courts in the State of New York. You agree to submit to exclusive jurisdiction in the State of New York, and you expressly waive all defenses to jurisdiction.

This Agreement is the entire agreement between you and In-Tools relating to your use of the Software and supersedes any other communications or advertising with respect

Drop Words

to the Software. If any provision of this Agreement is held invalid, the remainder of this Agreement will continue in full force and effect. In-Tools failure to insist upon or enforce strict performance of any provision of this Agreement shall not be construed as a waiver of any provision or right. Neither the course of conduct between the parties nor trade practice shall act to modify any provision of this Agreement. In-Tools may assign its rights and duties under this Agreement to any party at any time without notice to you.

Modifications of Agreement

In-Tools may modify this Agreement at any time without providing notice to you. Such modification will be made by posting a revised agreement on its web site and such modification shall be deemed effective immediately upon posting of the modified Agreement. Your continued access or use of the Software or Services shall be deemed your acceptance of the modified Agreement. You agree to check our web site periodically to review such modifications.

Termination or Modifications of Software

You may terminate this Agreement at any time. The In-Tools may immediately terminate the Agreement if you breach any representation, warranty, agreement or obligation contained or referred to in the Agreement. Upon termination, you must dispose of the Software and all copies or versions of the Software by destroying the Software. In-Tools reserves the right to modify the Software at any time without providing notice to you. In-Tools right to modify the Software applies to all or any aspect of the Software.

YOU ACKNOWLEDGE THAT YOU HAVE READ THIS AGREEMENT AND UNDERSTAND IT AND THAT, BY USING THE SOFTWARE, WEB SITE, YOU AGREE TO BE BOUND BY ITS TERMS AND CONDITIONS.