

Style Utilities

**CS3/CS4/CS5
InDesign Plug-in**

version 1.0.8

last revision: January 9, 2011

Style Utilities

Contents

- 3 What is Style Utilities?
- 4 Installation
 - Macintosh Install
 - Windows Install
- 6 Purchasing Licenses and Activation
- 8 Conditional Paragraph Style Changer
- 9 Style Between Delimiters
- 10 Create Multi Line Styles
- 11 Consecutive Styles
- 12 Apply Next Styles
- 13 Create Hyperlinks from URLs
- 14 Change Case by Style
- 16 All Caps to Small Caps
- 16 Addendum
 - What is “APID ToolAssistant”?
- 18 Acknowledgements
- 19 License Agreement

What is Style Utilities?

Style Utilities is a collection of functions designed to aid in formatting text efficiently and accurately.

Currently *Style Utilities* includes the following functions:

1. Conditional Paragraph Style Changer.
2. Style Between Delimiters
3. Create Multi Line Styles.
4. Consecutive Styles.
5. Apply Next Styles.
6. Create Hyperlinks from URLs.
7. Change Case by Style.
8. All Caps to Small Caps.

We hope to add more utilities in the near future. If there is a formatting utility that you would like to see added to this collection, please contact us at wishlist@in-tools.com. Registered users are eligible for free upgrades as new utilities are added.

Style Utilities

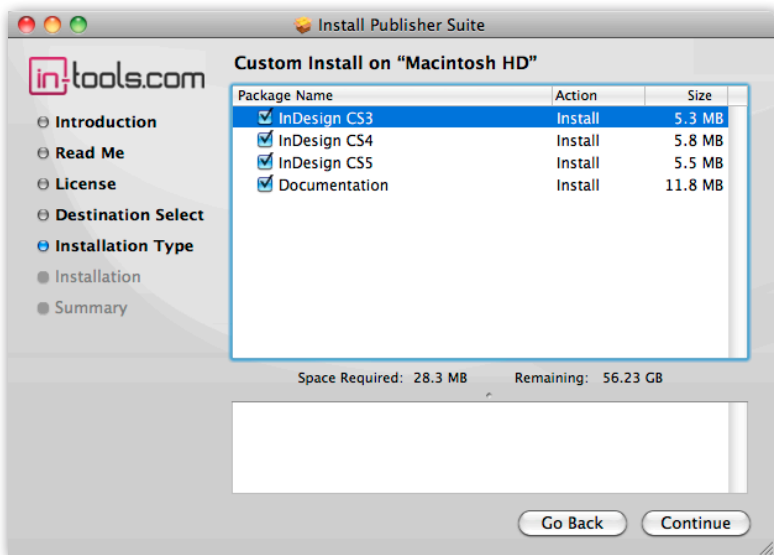
Installation

Style Utilities was developed using a product called “APID ToolAssistant” created by Rorohiko. This necessary central controller does a lot of the low-level processing. *If you are interested in the technology behind the development, you can read the addendum on [page 16](#).*

All the necessary components of *Style Utilities* are installed in a single step by our installers. The installer includes APID ToolAssistant as well.

To run the installer, simply double click on the installer package on Macintosh or the installer wizard on Windows, and it will walk you through the few steps required.

Macintosh Install

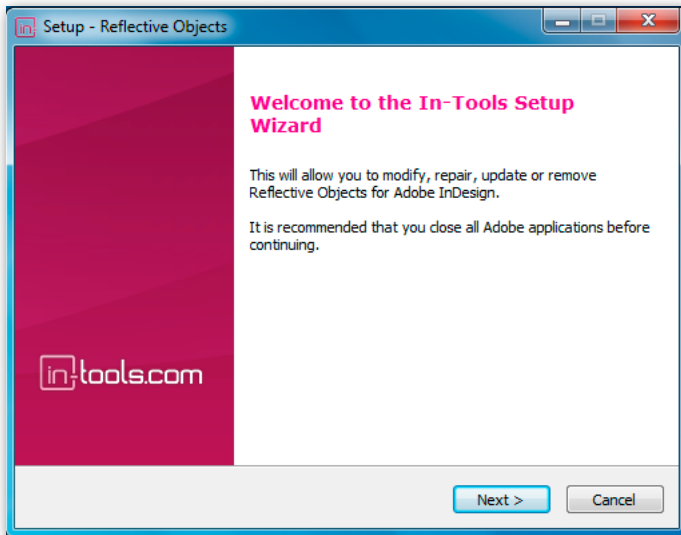


On Macintosh you will be offered the option to install on CS3, CS4, or CS5 as shown above. The option to install any version not currently installed will

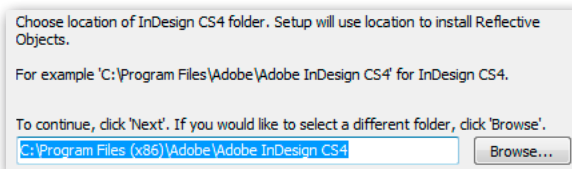
be greyed out. We advise that you keep the option to install the documentation checked.

■➡ *Please note: If your installation of InDesign is not in the default location, you will not be able to install on Macintosh! Before running the installer, make sure InDesign is located in: /Applications/Adobe InDesign CSX.*

Windows Install



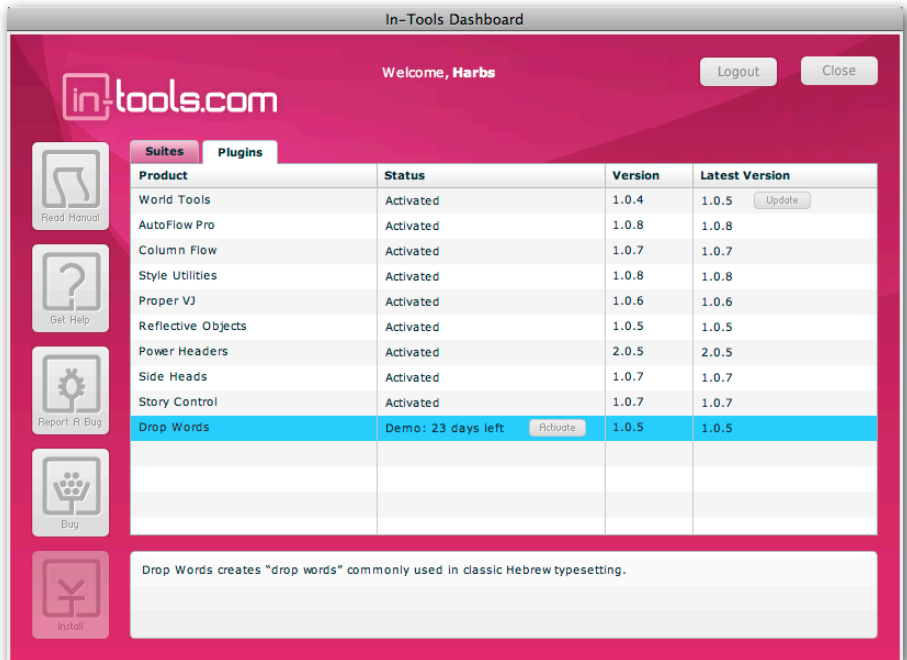
The Windows installer has the additional step that allows you to select your InDesign folder:



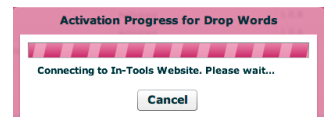
Style Utilities

Purchasing Licenses and Activation

In-Tools suites and plugin are activated from within InDesign using the In-Tools Dashboard. To access the Dashboard, select “InTools → In-Tools Dashboard...”. That will bring up the following dialog:

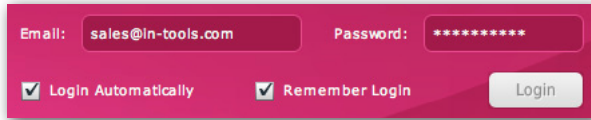


The Dashboard shows all the information you need to know about your plugins (or suites). To activate, simply click on the “Activate” button next to the product you would like to activate. If it is installed as part of a suite, all the components of the suite will be activated as a whole. Wait a few moments while the activation process completes. When it does, you will need to restart InDesign.



Purchasing Licenses and Activation

To activate, you must have a valid In-Tools account, and you will need to log in from the Dashboard:

A screenshot of a login form with a dark blue background. It features two input fields: 'Email:' with the text 'sales@in-tools.com' and 'Password:' with a masked password '*****'. Below these are two checked checkboxes: 'Login Automatically' and 'Remember Login'. A 'Login' button is positioned to the right of the checkboxes.

We recommend keeping both the “Login Automatically” and the “Remember Login” check-boxes checked. This will ensure you are always logged in when the dialog is opened (assuming you have an internet connection). If you try to log in with an email account which is not registered, you will be given the option to create a new account.

You also must have purchased a license of the plugin to activate it. If you have not yet purchased a license, you can do so using the “Buy” button:

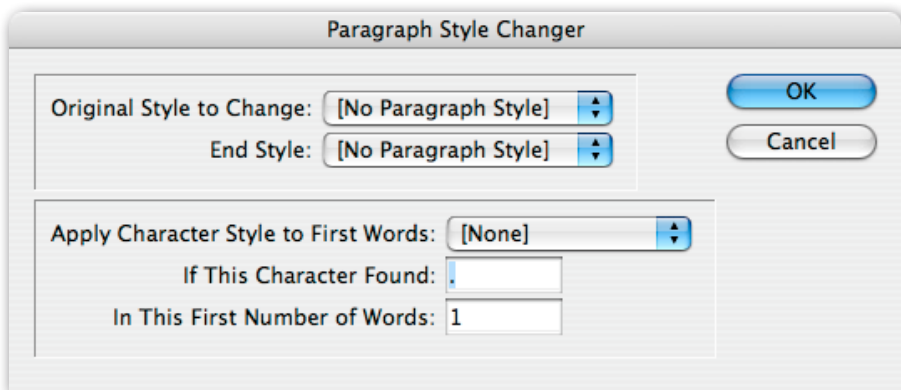


For further questions and issues regarding licensing and activation, please refer to the [FAQ web page](#); or for more help, [please visit our forum](#).

Style Utilities

Conditional Paragraph Style Changer

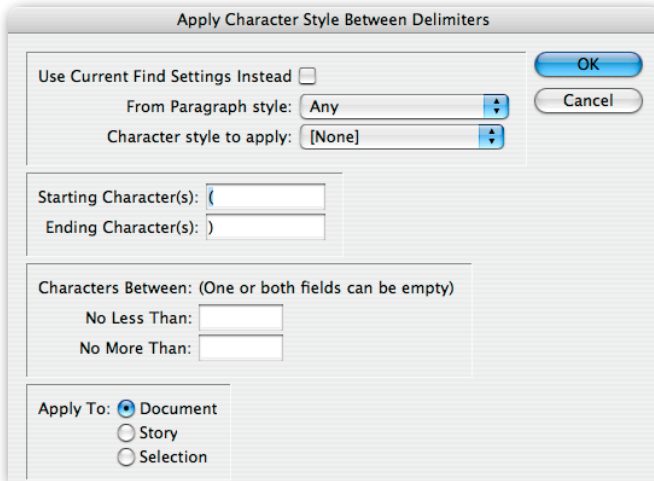
This utility is used for changing the styling of paragraphs based on the content in the beginning of the paragraph.



Select InTools ➔ Style Utilities ➔ Conditional Style Changer, and the above dialog box will appear. Select the style you want to change in the first drop-down list, “Original Style to Change”. In the second drop down list, select the new style. You also have the option of selecting a character style to apply to the specified number of words. In the first input field type in the character which will trigger a style change. The style change will be triggered if the character is found anywhere in the first number of words defined in the second input field.

Style Between Delimiters

This utility is used for applying text styling between two defined characters or set of characters. One very common use would be to apply character styles using custom tags.



Select InTools → Style Utilities → Style Between Delimiters... to bring up the above dialog. There are four sections to the dialog box. The top area allows you to select the styles. The first drop-down list, “From Paragraph Style”, will limit the search to a specific paragraph style. Select “Use Current Find Settings Instead” to search by criteria such as color, character style, etc. The last find settings used in the application find and replace dialog will be used to find the text. *Please note: If the “Use Current Find Settings” is checked, the selection of the paragraph style is ignored.*

Starting Character(s) is the delimiter at the beginning of the text to be styled. Ending Character(s) is the ending delimiter. The delimiter is styled as well as the text.

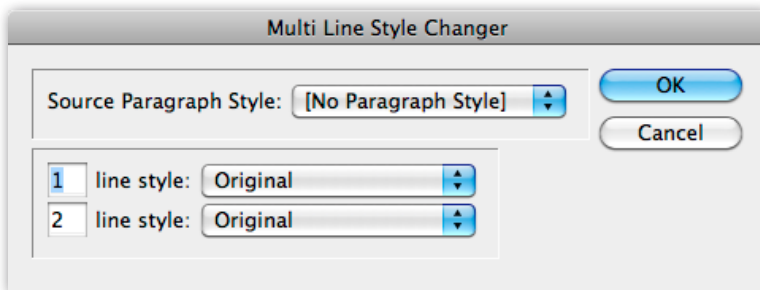
Style Utilities

“Characters Between” give an option to limit the number of characters between the delimiters. If the minimum field is left blank, there is no minimum. If the maximum field is left blank there will be no maximum.

Additionally there is an option to limit the search range. The options are context-sensitive. If there is nothing selected in the document, the only selectable range will be the document. If there is a story or part thereof selected in the document, the “story” radio button will appear. If there are at least two characters selected, the “Selection” radio button will appear as well. Selections can be either text or text frames.

Create Multi Line Styles

“Create Multi Line Styles” applies styles based on the number of lines of the formatted text. It will change the original style to the new one, if it takes up the selected number of lines. Use this utility to easily style header text and the like. Select InTools ➤ Style Utilities ➤ Create Multi Line Styles and the following dialog will appear:



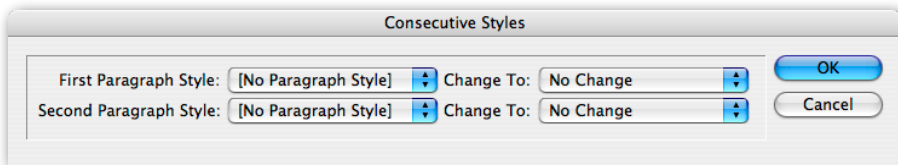
Both the one and two line style drop-down lists are optional. To make no changes to either single lines of text or double lines of text, just leave the selection as “Original”.

The number of lines defaults to 1 for the first style and 2 for the second style. The default values will change the styles if the paragraphs have one or two lines respectively. These values can be changed to whatever you like, offering flexibility in the utility's use.

Consecutive Styles

Consecutive Styles is a utility which applies styles to consecutive paragraphs of specific styles. It can be used in a number of different situations. It can be used to change the style of any paragraph of a particular style followed by a paragraph followed by a specific other style. It can be used to change the style of a paragraph *preceded* by a specific style. It can also be used to change the styling of a number of identically styled paragraphs, by either changing the first one or the last one.

To use *Consecutive Styles*, select InTools → Style Utilities → Restyle Consecutive Paragraphs... and the following dialog will appear:



In the shown dialog, select the original paragraph styles on the left, and the resultant paragraph styles on the right. You can select to change the first, second, or both. If you have a range of identically styled paragraphs (a list for example), and would like the first or last paragraph to have a unique style, do the following: To create a unique first style, create the first paragraph style and apply it to all the paragraphs (by a search and replace, or by modifying the existing style). Then select the first style in both dropdowns on the left,

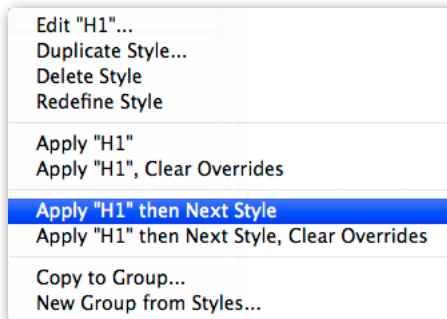
Style Utilities

and select “No Change” in the top “Change to” dropdown and the “not-first style” in the bottom “Change To” dropdown. To create a unique last style, do the same thing in reverse (changing the first paragraph instead of the second).

Apply Next Styles

InDesign has the ability to define “next styles” to paragraph styles. “Next Styles” are paragraph styles which should be applied after the defined one. This is great when typing or pasting in text. You can set up a whole series of styles which can each be applied in turn.

When you have text which is already placed, it’s a bit trickier to get “next styles” to be applied, but that can be done as well. You need to select a span of text and right click on the paragraph style in the paragraph style panel. this brings up this context menu:

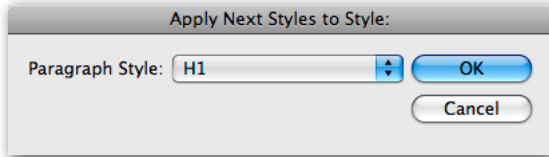


After selecting Apply [style] then Next Style, the entire “next style chain” will be applied to the selected text.

A problem becomes apparent however, when you have a style scattered around your document which should have a series of styles following it, but

Create Hyperlinks from URLs

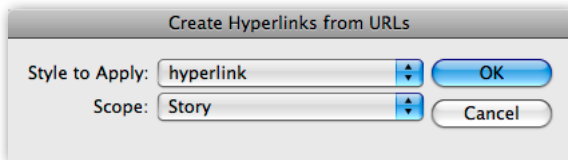
it can not be looped in a structured loop (for example, if you have a series of headings and then a non-determined number of body text paragraphs). That's why we created the "Apply Next Styles" function. It searches the document for every instance of the style you select and then applies all the "next styles" in turn. To use, just select the beginning style and press OK.



Create Hyperlinks from URLs

This utility will automatically create hyperlinks from any text it recognizes as a valid URL. It's very smart, and will ignore manually inserted line breaks on long URLs as well.

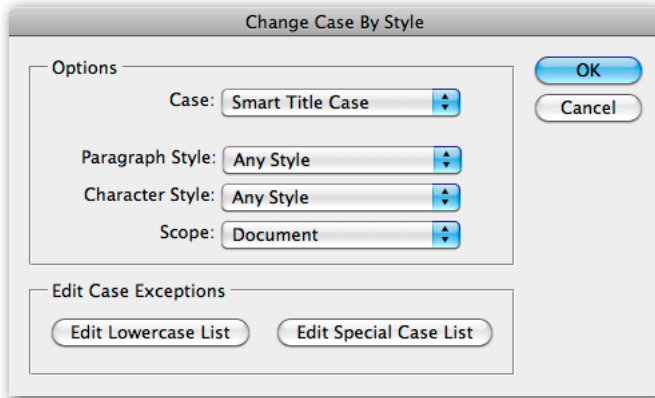
You can select the character style to apply as well as the scope of text to change (Document, Story, or Selection).



Style Utilities

Change Case by Style

This utility will change all text with the specified style(s) to the selected case.



There are four different options: UPPERCASE, lowercase, Smart Title Case, and Sentence case. Uppercase, lowercase, and sentence case are the same results you would get by changing the case manually. Smart Title Case, is (as the name suggests) very smart! It will automatically convert text to title case based on complex rules! Additionally, there are two word lists to allow you control over this behavior. The word lists can be edited by clicking on one of the “edit buttons” in the dialog shown above..

➡ The word lists should always be edited using the dialog. The word list files should never be edited directly. For Smart Title Case to work correctly, the word lists must be sorted in a specific way, and the dialog ensures that it is.

The rules which the title case uses are as follows:

The first and last words are always capitalized, as well as any word following a period (full stop) or colon. Any compound word separated by a “/”,

Change Case by Style

“, dash or m-dash will have the letter immediately following the separator capitalized. Any other word will be capitalized unless it appears in the lowercase word list. Any word appearing in the list will be lowercase only if it is not a “starting” word. For example: In the title, “The Last of the Mohicans”, the first word “the” will be capitalized, while the second time “the” appears will not. This is because the first word is the beginning of the sentence. Similarly, in the title, “Lion: The King of the Jungle”, the first word “the” will be capitalized because it follows a colon. The lowercase word list can be edited to include any words you like. All words should be separated by a single space.

Any word appearing in the “special case” will always be capitalized exactly as it appears in the file, regardless of position. This is useful for words like “InDesign”, “USA”, “UK”, etc., which have capitals in the middle of the word. This file can also be used to force lowercase on specific words and override the default rules. So, let’s assume you would like the word “a” to always be lowercase, even if it is the first word in your header text. You would simply put the word “a” in your special case list, and it will always be lowercase. When a word appears in both lists, the special case list supersedes the lowercase one.

- The Smart Title Case of Style Utilities uses the same logic as the Smart Title Case of Power Headers, and both use a single set of text files for the lowercase and special case definitions. Editing the list in either plugin will affect the other.

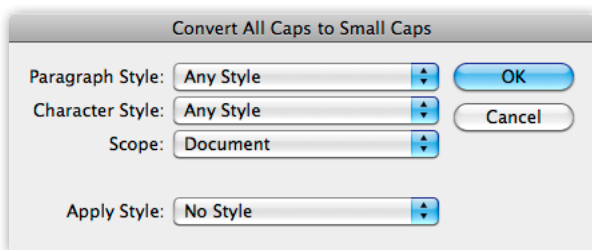
You can select a paragraph style, a character style, or both for options of which text to convert. You can also select what scope of text to convert

Style Utilities

(Document, Story, or Selection). If neither a character style or paragraph style is selected, all the text in the selected scope will be converted.

All Caps to Small Caps

This utility will convert text encoded as all caps to proper small caps. It offers a lot of flexibility in the styles it converts as well as the range of text it converts:



Addendum

What is “APID ToolAssistant”?

Classically, there are only two ways to automate InDesign. One way is by scripting. Scripts are a series of commands written in one of the three supported scripting languages — AppleScript for the Macintosh, Visual Basic for Windows, or ExtendScript for both platforms. ExtendScript is Adobe’s version of javascript. For scripts to run, they must be placed in the application script folder and explicitly run. For automation to be truly automatic, it requires “event processing”. This means that certain events trigger specific processes to take place. There is limited event-triggered scripting available in CS3.

To achieve true integration, plug-ins must be programmed using C++. Developing C++ plug-ins is a very involved, and lengthy process. APID ToolAssistant is a plug-in which allows very fine grained event processing using ExtendScript. It allows for creation of advanced plug-ins in a fraction of the time required when programming using C++. It also aids in the creation of hybrid plug-ins which mix ExtendScript and C++ for maximum efficiency.

Without the APID ToolAssistant, it would not have been possible to create the collection of plug-ins we offer in the same amount of development time. This increased programming efficiency means more functionality for the end user and lower prices.

Additionally, APID ToolAssistant offers the ability to attach scripts to specific objects. These attached scripts can be run automatically when triggered by specific events. Anyone who has a licensed version of the APID ToolAssistant plug-in installed can create and use these attached scripts. There are also additional scripting properties and methods which are usable by scripters. For more information see Rorohiko's web site.

Style Utilities

Acknowledgements

We wish to thank the many people who have helped make In-Tools plug-ins possible.

To those who give graciously of their time and expertise on the InDesign scripting forum: thank you for introducing us to automating within InDesign. Most specifically, Dave Saunders, Olav Kvern, and Peter Kahrel.

To Kris Coppieters, thank you for your incredible support throughout the entire development process. Your help with product improvements and with coding tips and techniques has been incredible. Your support has been above and beyond what we could have reasonably expected. It has really been a pleasure working together. Thank you.

To all our beta testers, thank you for the valuable input which helped shaped our plug-ins. To Brad Walrod: a special thank you for your unrelenting comments and suggestions. To Peter Gold and Raphael Freeman: thank you for your many useful suggestions.

License Agreement

Please read the following document carefully!

This is a legal agreement (the Agreement) between you and Print Israel LLC (In-Tools), the developer of the In-Tools software. This Agreement pertains to your use of the In-Tools software and documentation which are provided to you by In-Tools (collectively, the Software). By copying, installing, or otherwise using the Software, you accept all the terms and provisions of the Agreement.

Terms of Use

The provisions of the [In-Tools Privacy Policy](#) are incorporated herein and made a part hereof.

License

This Agreement grants you a personal, non-exclusive, non-transferable, non-sublicensable right to use one copy of the Software for use on a single computer and/or workstation for each license that you purchase. You may try the Software before purchasing a license, for the specified amount of time in the materials accompanying the Software. YOU UNDERSTAND AND AGREE THAT BY USING THE TRIAL SOFTWARE, AFTER THE AMOUNT OF TIME YOU MAY NOT BE ABLE TO CONTINUE TO USE THE SOFTWARE UNLESS YOU PURCHASE A LICENSE.

In-Tools reserves all rights in the Software not expressly granted herein, including without limitation ownership and proprietary rights.

License Restrictions

You may not reverse engineer, decompile or disassemble the Software. The restrictions contained herein apply equally to any updates that may be provided to you by In-Tools.

Intellectual Property Rights and Third Party Materials

All service marks, logos, trade names, trade dress, and trademarks of In-Tools (collectively Marks) are the exclusive property of In-Tools and nothing in this Agreement shall grant you the license to use such Marks. All intellectual property rights in the

Style Utilities

Software are owned exclusively by In-Tools and are protected by United States of America copyright laws and international copyright treaty provisions. Any violation of the terms set forth herein is expressly prohibited by law and may result in severe civil and criminal penalties.

Disclaimer of Warranties

ALL SOFTWARE PROVIDED BY IN-TOOLS ARE PROVIDED AS IS. IN-TOOLS AND ITS AGENTS, PARTNERS, OR EMPLOYEES MAKE NO REPRESENTATION OR WARRANTY TO YOU OR ANY OTHER PERSON OR ENTITY, WHETHER EXPRESS, IMPLIED, OR STATUTORY, AS TO THE DESCRIPTION, QUALITY, TITLE, NON-INFRINGEMENT, MERCHANTABILITY, COMPLETENESS, OR FITNESS FOR A PARTICULAR USE OR PURPOSE AS TO THE SOFTWARE PROVIDED TO YOU, OR AS TO ANY OTHER MATTER, ALL SUCH WARRANTIES HEREBY BEING EXPRESSLY EXCLUDED AND DISCLAIMED.

NEITHER IN-TOOLS NOR ANY OF ITS AGENTS, PARTNERS, OR EMPLOYEES WARRANTS THAT THE SOFTWARE OR SERVICES ARE ERROR FREE OR WILL OPERATE WITHOUT CAUSING LOSS OR INTERRUPTION YOUR COMPUTER USAGE OR DATA. YOU ASSUME TOTAL RESPONSIBILITY AND RISK FOR YOUR USE OF THE SOFTWARE.

Limitation of Liability

IN NO EVENT SHALL IN-TOOLS, ITS AFFILIATES, SUBSIDIARIES, PARENT COMPANIES, AGENTS, NETWORK SERVICE PROVIDERS, PARTNERS, OR EMPLOYEES BE LIABLE TO YOU OR ANY THIRD PARTY IN ANY RESPECT FOR ANY COSTS OR DAMAGES ARISING EITHER DIRECTLY OR INDIRECTLY FROM THE USE OF IN-TOOLS SOFTWARE INCLUDING WITHOUT LIMITATION ANY ACTUAL, INCIDENTAL, CONSEQUENTIAL, EXEMPLARY, PUNITIVE, RELIANCE OR SPECIAL DAMAGES, OR FOR ANY LOSS OF REVENUE, PROFITS, USE, DATA, GOODWILL OR BUSINESS OPPORTUNITIES OF ANY KIND OR NATURE WHATSOEVER, ARISING IN ANY

MANNER FROM ANY CAUSE OF ACTION OR CLAIM RELATING TO THIS AGREEMENT, TO THE SERVICES PROVIDED BY IN-TOOLS OR TO THE USE OF THE SOFTWARE. THIS LIMITATION OF LIABILITY APPLIES EQUALLY TO ANY THIRD PARTIES WITH WHOM IN-TOOLS ENTERS INTO A BINDING AGREEMENT TO MARKET, DISPLAY AND/OR DISTRIBUTE THE SOFTWARE TO END USERS AND SUCH THIRD PARTIES SHALL NOT BE LIABLE TO YOU OR ANY OTHER THIRD PARTY FOR ANY OF THE DAMAGES SET FORTH ABOVE.

Export Control Laws.

You agree to comply with all laws, rules and regulations applicable to the export of the Software. Specifically, you shall not export, re-export or transship the Software, or the direct product thereof, in violation of any United States laws and regulations which may from time to time be applicable. None of the Software or underlying information or technology may be downloaded or otherwise exported or re-exported (i) into, or to a national or resident of, Cuba, Iran, Iraq, Libya, North Korea, Sudan, Syria or any other country to which the U.S. has embargoed goods; or (ii) to anyone on the U.S. Treasury Department's list of Specially Designated Nationals or the U.S. Commerce Department's Table of Denial Order. By downloading or using the Software, you are agreeing to the foregoing and you are representing and warranting that you are not located in, under the control of, or a national or resident of any such country or on any such list.

Jurisdiction and Other Provisions

This Agreement and the relationship between In-Tools and you shall be governed in accordance with the laws of the State of New York. Any dispute between you and In-Tools regarding this Agreement will be subject to the exclusive jurisdiction of the state and federal courts in the State of New York. You agree to submit to exclusive jurisdiction in the State of New York, and you expressly waive all defenses to jurisdiction.

This Agreement is the entire agreement between you and In-Tools relating to your use of the Software and supersedes any other communications or advertising with respect

Style Utilities

to the Software. If any provision of this Agreement is held invalid, the remainder of this Agreement will continue in full force and effect. In-Tools failure to insist upon or enforce strict performance of any provision of this Agreement shall not be construed as a waiver of any provision or right. Neither the course of conduct between the parties nor trade practice shall act to modify any provision of this Agreement. In-Tools may assign its rights and duties under this Agreement to any party at any time without notice to you.

Modifications of Agreement

In-Tools may modify this Agreement at any time without providing notice to you. Such modification will be made by posting a revised agreement on its web site and such modification shall be deemed effective immediately upon posting of the modified Agreement. Your continued access or use of the Software or Services shall be deemed your acceptance of the modified Agreement. You agree to check our web site periodically to review such modifications.

Termination or Modifications of Software

You may terminate this Agreement at any time. The In-Tools may immediately terminate the Agreement if you breach any representation, warranty, agreement or obligation contained or referred to in the Agreement. Upon termination, you must dispose of the Software and all copies or versions of the Software by destroying the Software. In-Tools reserves the right to modify the Software at any time without providing notice to you. In-Tools right to modify the Software applies to all or any aspect of the Software.

YOU ACKNOWLEDGE THAT YOU HAVE READ THIS AGREEMENT AND UNDERSTAND IT AND THAT, BY USING THE SOFTWARE, WEB SITE, YOU AGREE TO BE BOUND BY ITS TERMS AND CONDITIONS.