

World Tools

**CS4
InDesign Plug-in**

version 1.0.5

last revision: January 9, 2011

Contents

4 What is World Tools?

4 What World Tools is NOT!

7 Installation

Macintosh Install

Windows Install

9 Purchasing Licenses and Activation

11 Introduction

Directional Settings

World-Ready Composer

14 Working with World-Ready Documents

Existing ME Documents

New Documents

Existing Documents

16 Character Settings

OpenType Settings

Kashidas

Digit Types

Diacritic Positioning

Character Direction

Keyboard Direction

18 Paragraph Settings

- Paragraph Direction
- Paragraph Numbering Formats
- Paragraph Justification Options
- Hanging Indents

20 Style Settings

21 Other Options

- Table Direction
- Story Direction
- Footnote Numbering Options
- Chapter Numbering Formats
- Page Numbering Formats
- World-Ready Composer

23 Additional Options

- Apply Hebrew Character Style
- Apply Latin Character Style
- Straighten Quotes
- Switch Story Direction
- Number by Spread
- Undoing Spread Numbering

27 Addendum

- What is “APID ToolAssistant”?

29 Acknowledgements

30 License Agreement

World Tools

What is World Tools?

Prior to InDesign CS4, the only way to work with Documents which contain right-to-left components (which are necessary for Arabic or Hebrew composition) was by using the ME (Middle Eastern) version of InDesign. With CS4, this has all changed. Adobe has included an additional composer called the World-Ready Composer which is capable of composing right-to-left languages. The World-Ready Composer also has the added capability of composing Indic languages.

Under the hood, all of the functionality of the ME version of InDesign is there in every version of InDesign CS4. Adobe has decided to keep this functionality hidden. The ME capabilities are only apparent when one tries to open ME documents (they open flawlessly in CS4). The composer which is enabled by default is the regular composer used in previous versions of InDesign which does not support right-to-left text.

World Tools was created to expose this dormant capability within CS4. It enables the World-Ready Composer as well as provides a user interface to be able to use it. It was created to enable all users of InDesign to edit documents with Arabic, Hebrew, and Indic text.

What World Tools is NOT!

World Tools is **not** a full replacement for the ME version of InDesign. There are many reasons why one would want or need to purchase the ME version of InDesign.

First of all, *World Tools* is based on technology which Adobe considers unsupported. Adobe did not expose the World-Ready Composer, because

What World Tools is NOT!

they are not ready/willing to support it yet. We have tested the technology to the best of our ability, and it works well, but they *are* bugs in the composer which the ME version addresses. If any of these bugs are show-stoppers, then the ME version is the only solution. We will address bugs in the user interface to the best of our ability, but any bugs in the underlying technology, is beyond our abilities to address. There is no guarantee by Adobe that they will even attempt to fix ME related bugs in incremental updates of CS4. This being said, we would like to receive any information on ME related bugs, so we can try to analyze them and alert Adobe of their existence.

Also, *World Tools* does not attempt to achieve the level of integration that the ME interface has. As a result, the interface of the ME version is much smoother and more familiar.

If you need control of right-to-left text in Photoshop, Illustrator, or Dreamweaver, it might pay to buy the ME version of the Creative Suite

Some advantages of *World Tools* are: 1) price – you don't need to buy a whole new program just for right-to-left composition. 2) Timely updates – historically, the ME updates took much longer to be released than the regular ones. 3) Use of right-to-left functions in the CJK versions of InDesign. The ME versions and CJK versions of InDesign are mutually exclusive. 4) Localized interfaces – *World Tools* can be used with any version of InDesign – no matter what the language of the user interface might be. The ME version only has English (IE), French, Hebrew, and Arabic interfaces.

World Tools also includes a number of functions which further aid in multilingual layout:

1. Apply Hebrew Character Style: This will apply a user-defined character style for Hebrew text within a non-Hebrew paragraph.

World Tools

2. **Apply Latin Character Style:** This will apply a user-defined character style for text which uses the “Latin” writing script within a non-Latin paragraph. (“Latin” includes: English, Spanish, French, etc.)
3. **Straighten Quotes:** This is for making quotes “dumb”. Useful for languages which don’t use curly quotes, such as Hebrew.
4. **Switch Story Direction:** This provides a menu item for reversing story direction. The menu item makes it possible to assign a keyboard shortcut to reverse the direction from right to left and left to right.
5. **Create Spread Numbering:** This creates “spread numbering” in which both pages on a spread will be assigned the same number. The numbers will only increase every other page.

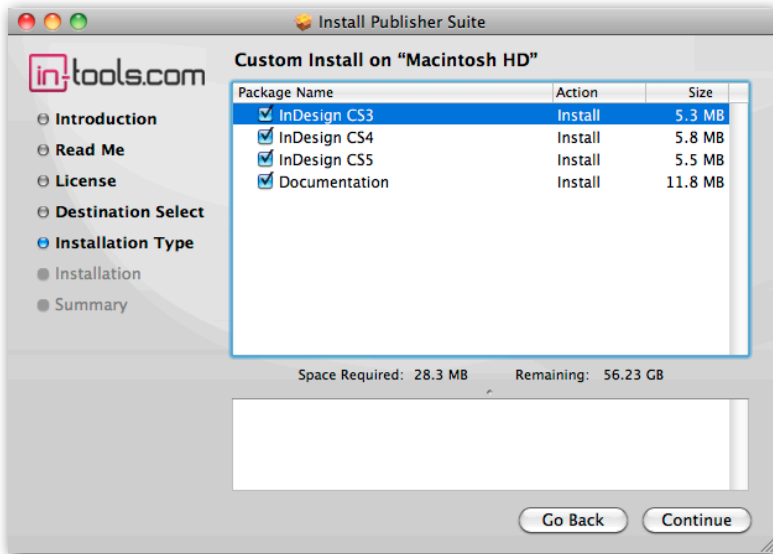
Installation

World Tools was developed using a product called “APID ToolAssistant” created by Rorohiko. This necessary central controller does a lot of the low-level processing. *If you are interested in the technology behind the development, you can read the addendum on [page 27](#).*

All the necessary components of *World Tools* are installed in a single step by our installers. The installer includes APID ToolAssistant as well.

To run the installer, simply double click on the installer package on Macintosh or the installer wizard on Windows, and it will walk you through the few steps required.

Macintosh Install



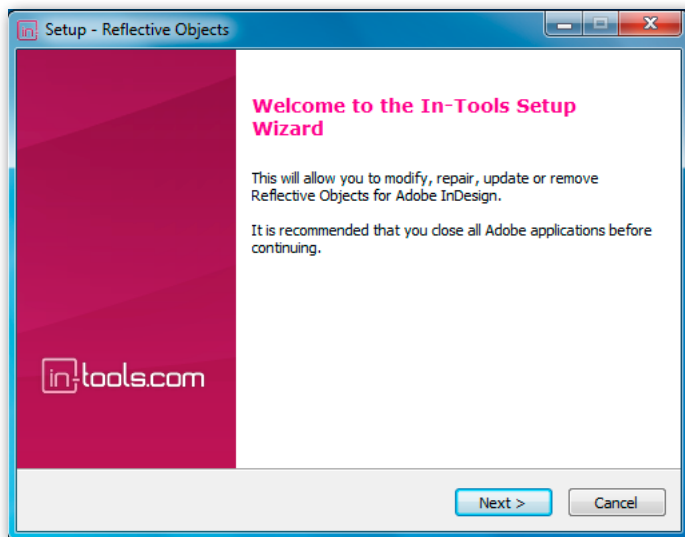
On Macintosh you will be offered the option to install on CS3, CS4, or CS5 as shown above. The option to install any version not currently installed will

World Tools

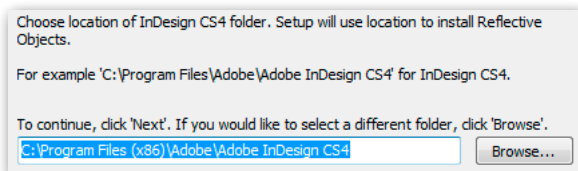
be greyed out. We advise that you keep the option to install the documentation checked.

■■■➡ *Please note: If your installation of InDesign is not in the default location, you will not be able to install on Macintosh! Before running the installer, make sure InDesign is located in: /Applications/Adobe InDesign CSX.*

Windows Install



The Windows installer has the additional step that allows you to select your InDesign folder:



Purchasing Licenses and Activation

In-Tools suites and plugin are activated from within InDesign using the In-Tools Dashboard. To access the Dashboard, select “InTools → In-Tools Dashboard...”. That will bring up the following dialog:

In-Tools Dashboard

Welcome, Harbs

Logout Close

Suites **Plugins**

Product	Status	Version	Latest Version
World Tools	Activated	1.0.4	1.0.5 Update
AutoFlow Pro	Activated	1.0.8	1.0.8
Column Flow	Activated	1.0.7	1.0.7
Style Utilities	Activated	1.0.8	1.0.8
Proper VJ	Activated	1.0.6	1.0.6
Reflective Objects	Activated	1.0.5	1.0.5
Power Headers	Activated	2.0.5	2.0.5
Side Heads	Activated	1.0.7	1.0.7
Story Control	Activated	1.0.7	1.0.7
Drop Words	Demo: 23 days left Activate	1.0.5	1.0.5

Drop Words creates “drop words” commonly used in classic Hebrew typesetting.

The Dashboard shows all the information you need to know about your plugins (or suites). To activate, simply click on the “Activate” button next to the product you would like to activate. If it is installed as part of a suite, all the components of the suite will be activated as a whole. Wait a few moments while the activation process completes. When it does, you will need to restart InDesign.

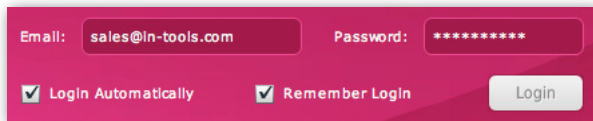
Activation Progress for Drop Words

Connecting to In-Tools Website. Please wait...

Cancel

World Tools

To activate, you must have a valid In-Tools account, and you will need to log in from the Dashboard:

A screenshot of a login form with a dark blue background. It features two input fields: 'Email:' with the text 'sales@in-tools.com' and 'Password:' with a masked password '*****'. Below these are two checked checkboxes: 'Login Automatically' and 'Remember Login'. A 'Login' button is positioned to the right of the checkboxes.

We recommend keeping both the “Login Automatically” and the “Remember Login” check-boxes checked. This will ensure you are always logged in when the dialog is opened (assuming you have an internet connection). If you try to log in with an email account which is not registered, you will be given the option to create a new account.

You also must have purchased a license of the plugin to activate it. If you have not yet purchased a license, you can do so using the “Buy” button:



For further questions and issues regarding licensing and activation, please refer to the [FAQ web page](#); or for more help, [please visit our forum](#).

Introduction

Directional Settings

There are many different levels of directional controls when dealing with right-to-left text. Below is an overview of what each type of control does.

1. Document Direction: Controls the binding direction (i.e. which way the book opens). When a book lays with the front cover up, a left bound (Roman) document has the spine on the left side, while a right-bound document has the spine on the right. Document direction can only be set by *World Tools* when creating the document.

2. Story Direction: Controls which way the columns flow in a multicolumn text frame. The story direction is controlled in the ME version by using the ME text frame tool when creating the story, or changing the story direction in the story panel. In *World Tools*, it's controlled by using the Switch Story Direction menu option, I's a toggle control which switches back and forth.

3. Table Direction: Controls the column direction within tables. In the ME version, it's controlled by a button on the tables panel, in *World Tools*, it's controlled by the Table direction menu options.

Please note: There is no option for setting the table direction in table styles. Table direction must be set manually for each table.

4. Paragraph Direction: Do not confuse this with paragraph alignment. The paragraph direction controls the overall direction of a paragraph. For example: if you type an English word and then a Hebrew/Arabic word followed by a period, if the paragraph direction is left to right the English word will be on the left, the Hebrew/Arabic word will be to the right of that, while the period will be all the way on the right. If the paragraph direction is right

World Tools

to left, the direction will be reversed with the English word on the right, the Hebrew/Arabic word to the left of that, with the period all the way on the left. If there is not a mix of directions within the paragraph (i.e. all English text), the only effect of paragraph direction will be on the punctuation at the end and the position of drop caps/numbering/bullets.

▣▣▣▣➡ There is a difference in behavior between the ME version and *World Tools*. In the ME version, when you change the paragraph direction, the paragraph alignment is automatically reversed as well. We have found this behavior annoying (we think the alignment should be kept as it's defined!) so we changed it in *World Tools*. The alignment can be manually set to whatever you want.

5. Character Direction: This controls the direction of characters. “Word” will come out “droW” when set to right to left. “Default” determines the direction based on the writing script. When set to “Default” neutral characters (like punctuation) are determined by the surrounding characters.

6. Keyboard Direction: In CS2 version 4.0.2, Winsoft introduced “Keyboard Direction”. The idea sound nice at first, but one which we believe is ill conceived. Basically Keyboard direction does the same thing as Character Direction (although character direction trumps keyboard direction when there's a conflict). The difference is that keyboard direction can be set automatically while typing. There's an option to have the keyboard direction on neutral characters inferred by the keyboard layout used when typing. If a right to left keyboard layout is used, the keyboard direction is set to right to left and vice versa. The problem is (besides the double functionality) that people don't always use the correct keyboard layout while typing. When

switching between languages, it's very common to not switch keyboard layout until starting to type. The neutral characters then have their direction set by the user. The real problem is directional neutral characters (like parenthesis, brackets, etc.) The appearance of the characters are affected by their direction. For example: (parenthetical statement) will be encoded <0028>parenthetical statement<0029> if the parenthesis are right to left and <0029>parenthetical statement<0028> if the parenthesis are left to right. This really gets messy once you start doing search and replaces, etc. Things get really messed up and the user has no idea why...

To make matters worse, the keyboard direction settings do not show up as style overrides so there's no indication that they are applied unless you go and check the keyboard direction menu listing...

We have not included the ability to set keyboard direction because we are opposed to its existence. We strongly advise anyone receiving files from an outside source to use the "Remove Keyboard Direction Overrides" command to ensure there are no keyboard direction settings anywhere in the document.

World-Ready Composer

As stated above, InDesign's World-Ready composer creates the ability to properly compose right-to-left text and all related features. It is our understanding that the World-Ready composer is based on Winsoft's ME code base, so for the most part, the functionality should be similar to the ME version. Any features relating to text composition which are available in the ME version, but have not been available in the Roman version, will only be properly composed if the World-Ready Composer is enabled. Any bugs which might be related to the World-Ready Composer will also only be an

World Tools

issue if the World-Ready composer is enabled for specific text. Some examples of features which are only available with the World-Ready Composer are: localized digits, diacritic positioning, Hebrew / Arabic numbering, etc.

Please note: The World-Ready Composer and the Japanese Composer of the CJK (Chinese, Japanese, and Korean) versions of InDesign are mutually exclusive. The World-Ready composer does not support CJK line breaks or the other CJK features, and the Japanese Composer does not support right-to-left text or other ME features. This means that you must choose whether you need proper ME / Indic composition, or CJK composition. Each paragraph can be set with a different composer. For paragraphs with mixed CJK and ME / Indic text, you must decide which composition rules are more important. The Japanese Composer is only available in the CJK versions of InDesign.

Working with World-Ready Documents

There will be three instances where you would be working with a World-Ready document. 1) You are working on an existing ME document (created in the ME version). 2) You are creating a new document which will have right-to-left text. 3) You are editing an existing Roman or CJK Document, and would like to add right-to-left text to the existing document.

Existing ME Documents

Existing ME documents will open correctly in any version of InDesign. You do not even need *World Tools* for this. The World-Ready Composer will be enabled by default and you can even make minor edits to the ME text. For any edits which require control over ME features, though, you would need either *World Tools* or the ME version of InDesign.

New Documents

By default, new documents in InDesign do not have the World-Ready Composer enabled. To enable the World-Ready Composer, you can simply create a new document and select the World-Ready Composer instead of the regular composer. There is also “Enable World-Ready Composition” in the menu options which enables the World-Ready Composer for all text and paragraph styles in the document.

The best way to create a World-Ready Document though, is by selecting File ➤ New ➤ World Ready Document. Keep in mind these commands will not show unless you have a document open already. If your document is to be right bound select File ➤ New ➤ Right Bound Document. The difference between creating a fresh World Ready Document and selecting “Enable World-Ready Composition” is in the root style. The root style (what is referred to as “No Paragraph Style”) of an existing document cannot be changed. An new World Ready document will have the root style set to the World-Ready Composer as well.

Please note: Binding direction can only be set by creating a new right bound document. If you need to change the direction of an existing document, we recommend creating a new document with the correct binding direction, setting the page size to the size equal to the original document and copying all the pages using the pages panel.

Existing Documents

To add ME or Indic text to an existing Roman or CJK document, you must enable the World-Ready Composer. For Roman Documents, you can simply select “Enable World Ready Composition”. This will change any instance of the regular Paragraph Composer or Single-line Composer to the

World Tools

corresponding World-Ready Composer. For CJK documents, selecting this option will not have an effect on text that has the Japanese composer applied. Instead you must select the World-Ready Composer for the appropriate paragraphs or Paragraph Styles.

Character Settings

OpenType Settings

There are a number of OpenType settings not normally available in the Roman version of InDesign. *World Tools* makes these settings available under the Character menu. The OpenType features require a font which supports them. The additional features available are as follows: 1) Historical Forms: These are special forms of letters which are generally somewhat archaic. 2) Justification Alternates: These are special stretched forms of glyphs which are generally used to better justify text. These are the forms used by “Naskh Justification”. 3) Localized Forms: There are different forms of glyphs in some languages. This feature applies the localized form. 4) Mark Positioning: Presumably this applies mark positioning programmed using the “mark” OpenType feature. In our tests, we have not seen any effect by changing this setting. We recommend using the Diacritic Positioning settings instead. 5) Overlap Swash: This enables swashes to *overlap* the following glyph preventing unsightly spacing. This is commonly used in Arabic. 6) Stretched Alternate: Enables the stretched forms of glyphs. 7) Stylistic Alternate: Uses the glyph form programmed with the “salt” OpenType feature.

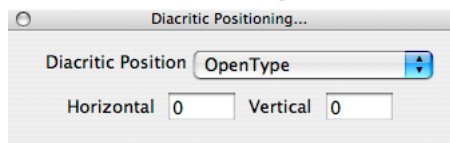
Kashidas

This option enables the use of kashidas in Arabic fonts. Kashidas are extended elements of glyphs which are used when justifying Arabic text.

Digit Types

Different languages around the world use different digit formats. The most commonly used format for digits is what we call Arabic digits (1,2,3, etc.). The World-Ready Composer supports 18 different digit formats.

Diacritic Positioning



The Diacritic Positioning dialog is a non-modal dialog which controls the position of diacritic marks. For automatic OpenType positioning of marks, select “OpenType” from the upper drop-down list. If you are using an older non-OpenType font, you can select any one of the other options. The “Loose”, “Medium” and “Tight” settings affect the vertical placement of diacritics in Arabic. In addition to the automatic placement, the diacritic can be manually moved by editing the Horizontal and Vertical values. These values are measured in 1/1000 em units.

Character Direction

Character direction controls which characters are considered right-to-left and which ones are considered left-to-right. Under normal circumstances Roman characters (as well as most writing scripts in the world) are left-to-right. Arabic and Hebrew are the primary examples of scripts which are right-to-left. When the character direction is set to “Default” InDesign tries to determine automatically what the correct character direction is. For the most part, this is simply a function of which Unicode range the glyph falls within. If it’s in the Hebrew or Arabic range, it will be right-to-left, otherwise,

World Tools

it will be left-to-right. For neutral characters (i.e. punctuation), InDesign uses an algorithm to determine if they should be right-to-left or left-to-right. This is based on the paragraph direction as well as the surrounding characters. Generally the Character Direction should be left with the default setting, unless the default behavior puts neutral characters in the wrong place.

Keyboard Direction

In *World Tools* we did not include the ability to set keyboard direction. We do not recommend its use, and we recommend removing all keyboard direction overrides on existing documents by selecting InTools → World Tools → Character Direction → Remove Keyboard Direction Overrides.

Paragraph Settings

Paragraph Direction

The paragraph direction sets the overall direction of the paragraph. This should not be confused with paragraph alignment. For example: if you type an English word and then a Hebrew/Arabic word followed by a period, if the paragraph direction is left to right the English word will be on the left, the Hebrew/Arabic word will be to the right of that, while the period will be all the way on the right. If the paragraph direction is right to left, the direction will be reversed with the English word on the right, the RtL word to the left of that, with the period all the way on the left. If there is not a mix of directions within the paragraph (i.e. all English text), the only effect of paragraph direction will be on the punctuation at the end and the position of drop caps/numbering/bullets.

Here are some examples of left aligned left-to-right paragraphs:

- A bulleted paragraph.

“עברית” is “Hebrew”.

“العربية” is “Arabic”.

Here’s a few left aligned right-to-left paragraphs:

- A bulleted paragraph.

“זה” “עברית” “Hebrew”.

“العربية” “Arabic” “يكون”.

Paragraph Numbering Formats

Besides the standard Roman Numbering Formats for numbered lists, *World Tools* includes six ME numbering formats as well as eleven CJK formats.

Paragraph Justification Options

There are three different paragraph justification options available. These are all applicable when the text is set to “justified”. The “Standard” setting simply adds space to justify text. The “Arabic” option will use kashidas to take up space if kashidas are enabled. The “Naskh” option will use naskh justification. If an OpenType font has justification alternates (jalt) programmed into the font and “Naskh” is selected, these alternates will be used to justify the text. The algorithm used is unpredictable. The justification alternates will work in any language.

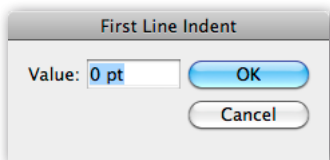
Hanging Indents

Due to a user interface bug in InDesign CS4, it is not possible to set hanging indents for right-to-left paragraphs using conventional methods. InDesign will not allow a user to set a negative value to the first line indent unless the

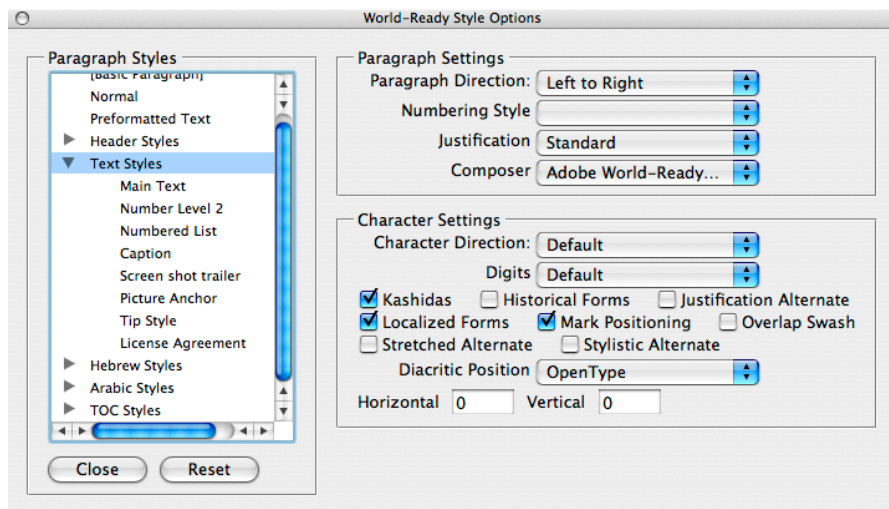
World Tools

left indent is at least as great as the negative indent you are using. While this is correct for left-to-right paragraphs, right-to-left paragraphs require a right indent for hanging indents.

We have included a dialog to work around this issue. Select “InTools → World Tools → Paragraph → First Line Indent” to bring up the following dialog where you can set a negative first line indent if needed:



Style Settings



World Tools has a unique dialog for applying World-Ready options to your existing Paragraph and Character styles. Shown above is the paragraph style

dialog. The character style dialog is similar, but without the paragraph level attributes. The list on the left shows the styles in your document, with World-Ready attributes on the right.

To set style attributes, select a style on the left and select the appropriate attribute on the right. Any selections will be applied immediately. In addition, style groups can be selected. When a style group is selected, the attributes will reflect all the styles and sub-styles in the group. If there are conflicting settings, the drop-downs will be blank and the check-marks will not be checked. When selecting an attribute for a style group, the attribute will be immediately applied to the entire group including styles within any subgroup. This is a quick way to apply attributes to many styles at once. If you wish to undo settings applied, you can press the “Reset” button underneath the listing of the style tree. The “Reset” button will reset all attributes listed back to the settings of the based-on style. For character styles that are not based on another style, it will reset the attributes to be not applied.

Other Options

Table Direction

The direction of a table determines whether columns start on the left or right. The table direction is set by selecting InTools ➤ World Tools ➤ Table Direction ➤ (Left To Right / Right To Left). Table direction cannot be set in table styles. The direction must be set manually on an individual basis.

Story Direction

The story direction controls whether columns of text in multi-column frames flow from the right-to-left or left-to-right. The story direction is indicated by the position of the in-ports and out-ports of text frames. The story

World Tools

direction can be switched at any time by selecting InTools → World Tools → Switch Story Direction.

Footnote Numbering Options

Besides the standard Roman footnote numbering formats, *World Tools* includes four ME numbering formats as well as two CJK formats. This setting is a document-wide setting, and is applied to the current document.

Chapter Numbering Formats

The Chapter Numbering format is also a document-wide setting. *World Tools* includes six ME formats and eleven CJK formats.

Page Numbering Formats

The page numbering format is the format that the numbers take when using automatic page numbers. Besides for the standard Roman number formats, *World Tools* enables the use of four ME formats. The page numbering format is applied to the section of the current active page.

World-Ready Composer

World Tools adds two new menu items to the Control Panel and Paragraph Panel drop-down menus. Besides the standard Single-line and Paragraph Composers, you can select the World-Ready variants of these composers. Usually, there's no reason you'd want to use the regular composers over the World-Ready ones. The World-Ready composer is a super-set of the regular composer. However if you encounter a bug which is specific to the World-Ready Composer, switching to the regular composer would be a work-around the bug (although that would preclude working with ME text.) Also, if you are using the CJK versions of InDesign, you might want to select the Japanese Composer instead. The World-Ready Composer is a parallel

composer, and does not support the Japanese aspects of the Japanese Composer.

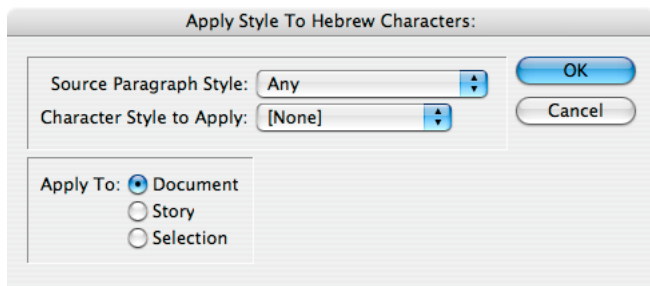
Additional Options

Apply Hebrew Character Style

A “writing script” is the set of characters used by the computer to compose text. Each writing script uses a unique set of characters. Each script is unique, but a script can include more than one language. For example, the Hebrew script is used by Hebrew and Yiddish. The Latin script is used by English, Spanish, French, and many others. The “Apply Style” functions recognize characters based on their script, and apply character styles accordingly.

“Apply Hebrew Style” creates a Hebrew Character Style for Hebrew text. This function should be used when the main paragraph text is in a language other than Hebrew, and the Hebrew text needs its own formatting. It identifies any text belonging to the Hebrew writing script, and takes into consideration all Hebrew letters, *nikud* (vowel marks), and *taamei hamikra* (cantillation marks). Additionally, it makes all single and double quotes “dumb”, and applies the style to punctuation within Hebrew text. For example the statement: This is ספר “מאוד” מענין! becomes: This is ספר “מאוד” מענין! In this example the Hebrew style is styled with Fontbit David at a reduced size, the quotes within the Hebrew statement had the Hebrew style applied to it and were straightened. The exclamation point immediately after the Hebrew text retains its regular formatting. The character style should be set before running this command.

World Tools

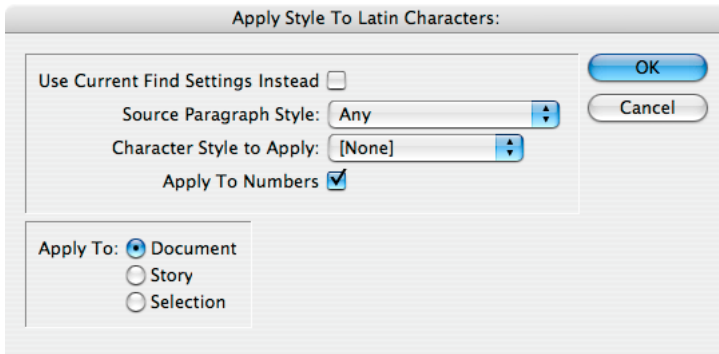


The above dialog box shows the options for applying the style. In the “Source Paragraph Style” drop down list you can either select “Any” or a specific Paragraph Style in your document. Choosing “Any” will apply the character style to any Hebrew text in all the paragraphs of the specified range. Choosing a specific style will limit the application of the style to text styled by that specific Paragraph Style. Use the “Character Style to Apply” drop down list to select the Character Style to apply.

The second section in the dialog allows you to select the text range. The options are context sensitive. If there is nothing selected in the document, the only selectable range will be the document. If there is a story or part thereof selected in the document, the “story” radio button will appear. If there are at least two characters selected, the “Selection” radio button will appear as well. Selections can be either text or text frames.

Apply Latin Character Style

This option is similar to “Apply Hebrew Character Style”. It styles text belonging to the Latin script within a paragraph whose main language uses a different writing script.



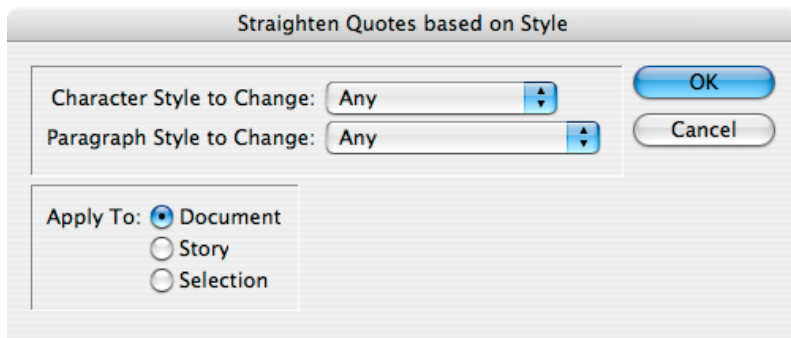
The above dialog box shows the options for applying this style. Select “Use Current Find Settings Instead” to search by criteria such as color, character style, etc. The last find settings used in the application find and replace dialog will be used to find the text. *Please note: If the “Use Current Find Settings” is checked, the selection of the paragraph style is ignored.* Whether or not this box is checked the “Character Style To Apply” must be selected. If “Apply To Numbers” is selected, numbers within the Latin text will be styled with the selected character style.

The second section in the dialog allows you to select the text range. The options are context sensitive. If there is nothing selected in the document, the only selectable range will be the document. If there is a story or part thereof selected in the document, the “story” radio button will appear. If there are at least two characters selected, the “Selection” radio button will appear as well. Selections can be either text or text frames.

Straighten Quotes

Hebrew and some other languages do not use curly quotes. Very often, curly quotes can creep into Hebrew text unintentionally. *Straighten Quotes* was created to deal with this issue.

World Tools



The options in the above dialog box are self-explanatory. Select a character style, a paragraph style, both, or neither. You can also select the text range as in to the “Apply Character Style” dialogs.

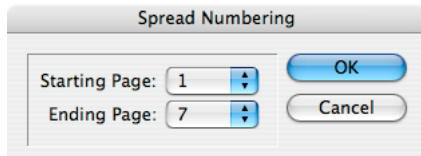
Switch Story Direction

Story direction in InDesign ME version is determined by text tool used to draw the text frame containing the story. If the ME type tool is used, the story direction will be right-to-left. If the regular type tool is used, the story direction will be left-to-right. The importance of story direction is primarily in the direction of text flow in multi-column text frames. The story direction is set for the story as a whole, and not on a frame by frame basis.

Without this plug-in, InDesign ME allows story direction to be changed afterwards by selecting a different story direction in the Story Palette / Panel. It is a very inconvenient way to switch story direction, since the only other function of the Story Palette / Panel is the rarely accessed Optical Margin Setting. The “Switch Story Direction” option provides a convenient way to change the story direction. Since the command is a menu item, it allows you to create a keyboard shortcut make changing story direction even easier.

Number by Spread

This utility offers the option to increase page numbering once per spread instead of once per page. This is useful when both pages in a spread need to show the same page number.



By default, the starting page will be the first page in the document, and the ending page will be the last. These numbers can be set to any page in the document, thereby giving spread numbering to only part of the document.

Undoing Spread Numbering

Spread numbering can be undone as well. The numbers in the drop-down list will be the current page numbers — 1,1,2,2, and so on.

Addendum

What is “APID ToolAssistant”?

Classically, there are only two ways to automate InDesign. One way is by scripting. Scripts are a series of commands written in one of the three supported scripting languages — AppleScript for the Macintosh, Visual Basic for Windows, or ExtendScript for both platforms. ExtendScript is Adobe’s version of Javascript. For scripts to run, they must be placed in the application script folder and explicitly run. For automation to be truly automatic, it requires “event processing”. This means that certain events trigger specific processes to take place. There is limited event-triggered scripting available in CS3.

World Tools

To achieve true integration, plug-ins must be programmed using C++. Developing C++ plug-ins is a very involved, and lengthy process. APID ToolAssistant is a plug-in which allows very fine grained event processing using ExtendScript. It allows for creation of advanced plug-ins in a fraction of the time required when programming using C++. It also aids in the creation of hybrid plug-ins which mix ExtendScript and C++ for maximum efficiency.

Without the APID ToolAssistant, it would not have been possible to create the collection of plug-ins we offer in the same amount of development time. This increased programming efficiency means more functionality for the end user and lower prices.

Additionally, APID ToolAssistant offers the ability to attach scripts to specific objects. These attached scripts can be run automatically when triggered by specific events. Anyone who has a licensed version of the APID ToolAssistant plug-in installed can create and use these attached scripts. There are also additional scripting properties and methods which are usable by scripters.

For more information see Rorohiko's web site at **www.rorohiko.com**.

Acknowledgements

We wish to thank the many people who have helped make In-Tools plug-ins possible.

To those who give graciously of their time and expertise on the InDesign scripting forum: thank you for introducing us to automating within InDesign. Most specifically, Dave Saunders, Olav Kvern, and Peter Kahrel.

To Kris Coppieters, thank you for your incredible support throughout the entire development process. Your help with product improvements and with coding tips and techniques has been incredible. Your support has been above and beyond what we could have reasonably expected. It has really been a pleasure working together. Thank you.

Thank you to David Blatner and Diane Burns for your encouragement and valuable advice in creating our World Tools plug-in. Thank you also to Mark Niemann-Ross for your incredible work in helping us developers.

To all our beta testers, thank you for the valuable input which helped shaped our plug-ins.

World Tools

License Agreement

Please read the following document carefully!

This is a legal agreement (the Agreement) between you and Print Israel LLC (In-Tools), the developer of the In-Tools software. This Agreement pertains to your use of the In-Tools software and documentation which are provided to you by In-Tools (collectively, the Software). By copying, installing, or otherwise using the Software, you accept all the terms and provisions of the Agreement.

Terms of Use

The provisions of the [In-Tools Privacy Policy](#) are incorporated herein and made a part hereof.

License

This Agreement grants you a personal, non-exclusive, non-transferable, non-sublicensable right to use one copy of the Software for use on a single computer and/or workstation for each license that you purchase. You may try the Software before purchasing a license, for the specified amount of time in the materials accompanying the Software. YOU UNDERSTAND AND AGREE THAT BY USING THE TRIAL SOFTWARE, AFTER THE AMOUNT OF TIME YOU MAY NOT BE ABLE TO CONTINUE TO USE THE SOFTWARE UNLESS YOU PURCHASE A LICENSE.

In-Tools reserves all rights in the Software not expressly granted herein, including without limitation ownership and proprietary rights.

License Restrictions

You may not reverse engineer, decompile or disassemble the Software. The restrictions contained herein apply equally to any updates that may be provided to you by In-Tools.

Intellectual Property Rights and Third Party Materials

All service marks, logos, trade names, trade dress, and trademarks of In-Tools (collectively Marks) are the exclusive property of In-Tools and nothing in this Agreement shall grant you the license to use such Marks. All intellectual property rights in the

Software are owned exclusively by In-Tools and are protected by United States of America copyright laws and international copyright treaty provisions. Any violation of the terms set forth herein is expressly prohibited by law and may result in severe civil and criminal penalties.

Disclaimer of Warranties

ALL SOFTWARE PROVIDED BY IN-TOOLS ARE PROVIDED AS IS. IN-TOOLS AND ITS AGENTS, PARTNERS, OR EMPLOYEES MAKE NO REPRESENTATION OR WARRANTY TO YOU OR ANY OTHER PERSON OR ENTITY, WHETHER EXPRESS, IMPLIED, OR STATUTORY, AS TO THE DESCRIPTION, QUALITY, TITLE, NON-INFRINGEMENT, MERCHANTABILITY, COMPLETENESS, OR FITNESS FOR A PARTICULAR USE OR PURPOSE AS TO THE SOFTWARE PROVIDED TO YOU, OR AS TO ANY OTHER MATTER, ALL SUCH WARRANTIES HEREBY BEING EXPRESSLY EXCLUDED AND DISCLAIMED.

NEITHER IN-TOOLS NOR ANY OF ITS AGENTS, PARTNERS, OR EMPLOYEES WARRANTS THAT THE SOFTWARE OR SERVICES ARE ERROR FREE OR WILL OPERATE WITHOUT CAUSING LOSS OR INTERRUPTION YOUR COMPUTER USAGE OR DATA. YOU ASSUME TOTAL RESPONSIBILITY AND RISK FOR YOUR USE OF THE SOFTWARE.

Limitation of Liability

IN NO EVENT SHALL IN-TOOLS, ITS AFFILIATES, SUBSIDIARIES, PARENT COMPANIES, AGENTS, NETWORK SERVICE PROVIDERS, PARTNERS, OR EMPLOYEES BE LIABLE TO YOU OR ANY THIRD PARTY IN ANY RESPECT FOR ANY COSTS OR DAMAGES ARISING EITHER DIRECTLY OR INDIRECTLY FROM THE USE OF IN-TOOLS SOFTWARE INCLUDING WITHOUT LIMITATION ANY ACTUAL, INCIDENTAL, CONSEQUENTIAL, EXEMPLARY, PUNITIVE, RELIANCE OR SPECIAL DAMAGES, OR FOR ANY LOSS OF REVENUE, PROFITS, USE, DATA, GOODWILL OR BUSINESS OPPORTUNITIES OF ANY KIND OR NATURE WHATSOEVER, ARISING IN ANY

World Tools

MANNER FROM ANY CAUSE OF ACTION OR CLAIM RELATING TO THIS AGREEMENT, TO THE SERVICES PROVIDED BY IN-TOOLS OR TO THE USE OF THE SOFTWARE. THIS LIMITATION OF LIABILITY APPLIES EQUALLY TO ANY THIRD PARTIES WITH WHOM IN-TOOLS ENTERS INTO A BINDING AGREEMENT TO MARKET, DISPLAY AND/OR DISTRIBUTE THE SOFTWARE TO END USERS AND SUCH THIRD PARTIES SHALL NOT BE LIABLE TO YOU OR ANY OTHER THIRD PARTY FOR ANY OF THE DAMAGES SET FORTH ABOVE.

Export Control Laws.

You agree to comply with all laws, rules and regulations applicable to the export of the Software. Specifically, you shall not export, re-export or transship the Software, or the direct product thereof, in violation of any United States laws and regulations which may from time to time be applicable. None of the Software or underlying information or technology may be downloaded or otherwise exported or re-exported (i) into, or to a national or resident of, Cuba, Iran, Iraq, Libya, North Korea, Sudan, Syria or any other country to which the U.S. has embargoed goods; or (ii) to anyone on the U.S. Treasury Department's list of Specially Designated Nationals or the U.S. Commerce Department's Table of Denial Order. By downloading or using the Software, you are agreeing to the foregoing and you are representing and warranting that you are not located in, under the control of, or a national or resident of any such country or on any such list.

Jurisdiction and Other Provisions

This Agreement and the relationship between In-Tools and you shall be governed in accordance with the laws of the State of New York. Any dispute between you and In-Tools regarding this Agreement will be subject to the exclusive jurisdiction of the state and federal courts in the State of New York. You agree to submit to exclusive jurisdiction in the State of New York, and you expressly waive all defenses to jurisdiction.

This Agreement is the entire agreement between you and In-Tools relating to your use of the Software and supersedes any other communications or advertising with respect

to the Software. If any provision of this Agreement is held invalid, the remainder of this Agreement will continue in full force and effect. In-Tools failure to insist upon or enforce strict performance of any provision of this Agreement shall not be construed as a waiver of any provision or right. Neither the course of conduct between the parties nor trade practice shall act to modify any provision of this Agreement. In-Tools may assign its rights and duties under this Agreement to any party at any time without notice to you.

Modifications of Agreement

In-Tools may modify this Agreement at any time without providing notice to you. Such modification will be made by posting a revised agreement on its web site and such modification shall be deemed effective immediately upon posting of the modified Agreement. Your continued access or use of the Software or Services shall be deemed your acceptance of the modified Agreement. You agree to check our web site periodically to review such modifications.

Termination or Modifications of Software

You may terminate this Agreement at any time. The In-Tools may immediately terminate the Agreement if you breach any representation, warranty, agreement or obligation contained or referred to in the Agreement. Upon termination, you must dispose of the Software and all copies or versions of the Software by destroying the Software. In-Tools reserves the right to modify the Software at any time without providing notice to you. In-Tools right to modify the Software applies to all or any aspect of the Software.

YOU ACKNOWLEDGE THAT YOU HAVE READ THIS AGREEMENT AND UNDERSTAND IT AND THAT, BY USING THE SOFTWARE, WEB SITE, YOU AGREE TO BE BOUND BY ITS TERMS AND CONDITIONS.